

Postcards from a Cosmic Traveller: Thomas Ruff's Images of Space

John G Hatch
Western University (London, Canada)

Cosmic Explorations: at the Intersection of Science, Space, Art, and Culture
The 11th Conference on the Inspiration of Astronomical Phenomena
20- 23 September 2022, CalTech, Pasadena, California



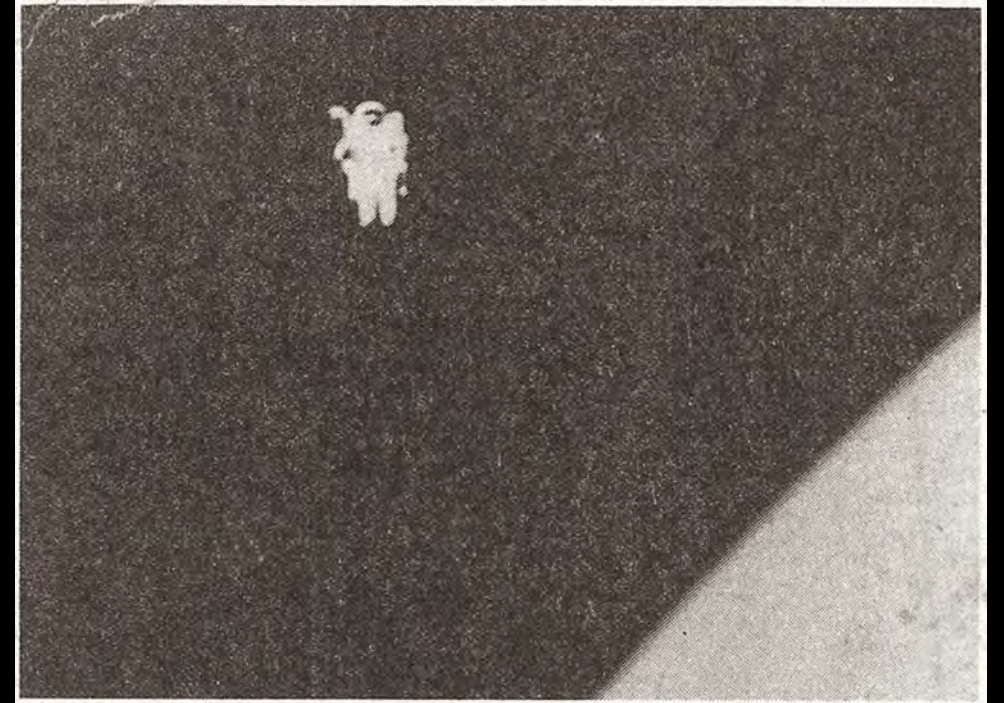
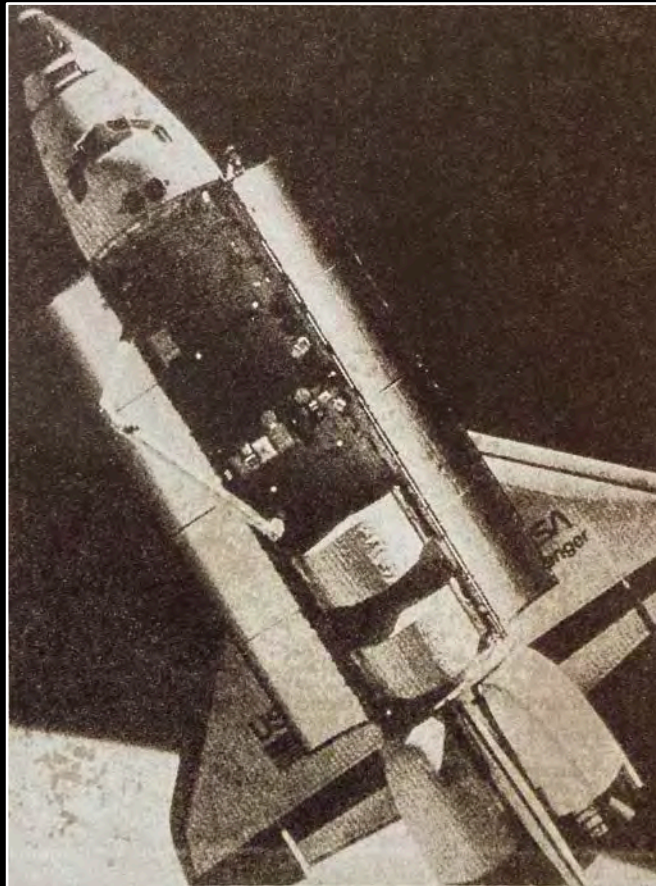
"I have an affinity for astronomy, so from time-to-time astronomical issues show up in my work."

Thomas Ruff

Thomas Ruff (1958-), 2013

Zeitungsfoto (Newspaper Photographs), 1990-1991

Thomas Ruff,
Zeitungsfoto 052,
1990



Thomas Ruff, Zeitungsfoto 112, 1990



Musée d'art moderne et contemporain de Saint-Étienne Métropole, Saint-Priest-en-Jarez, 2022



Thomas Ruff, Zeitungsfoto 060, 1990

jpgs (2004-)



Thomas Ruff, jpeg ea01, 2007

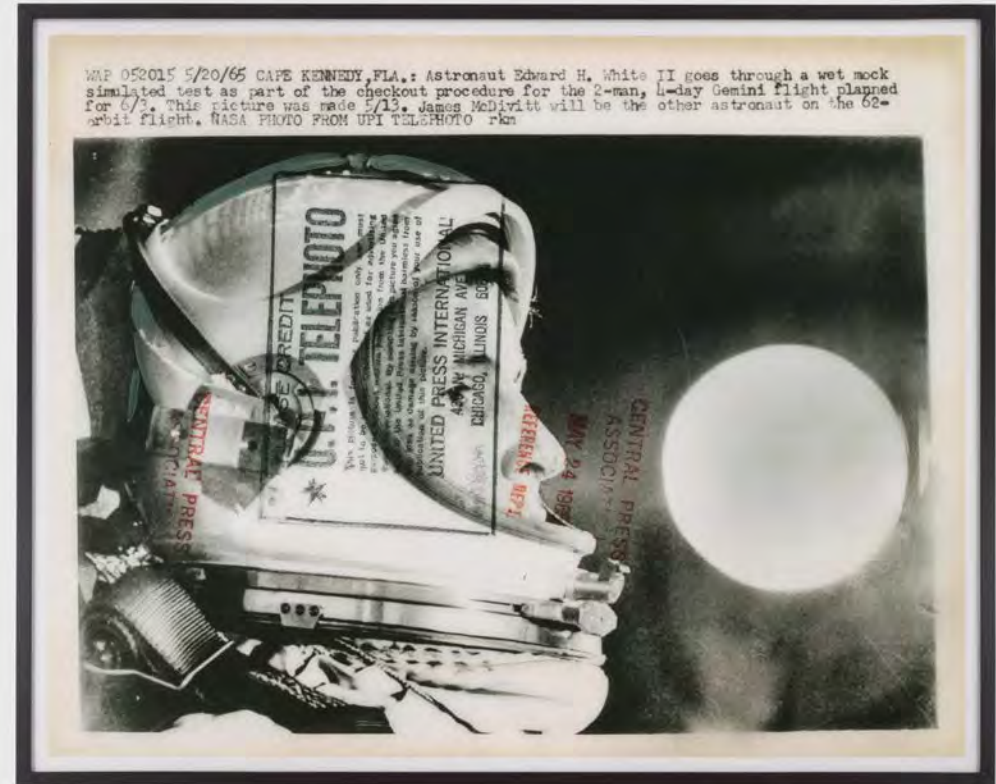


Thomas Ruff, jpeg rl05, 2007



press++ (2015-)

Thomas Ruff, press++ 01.16, 2015



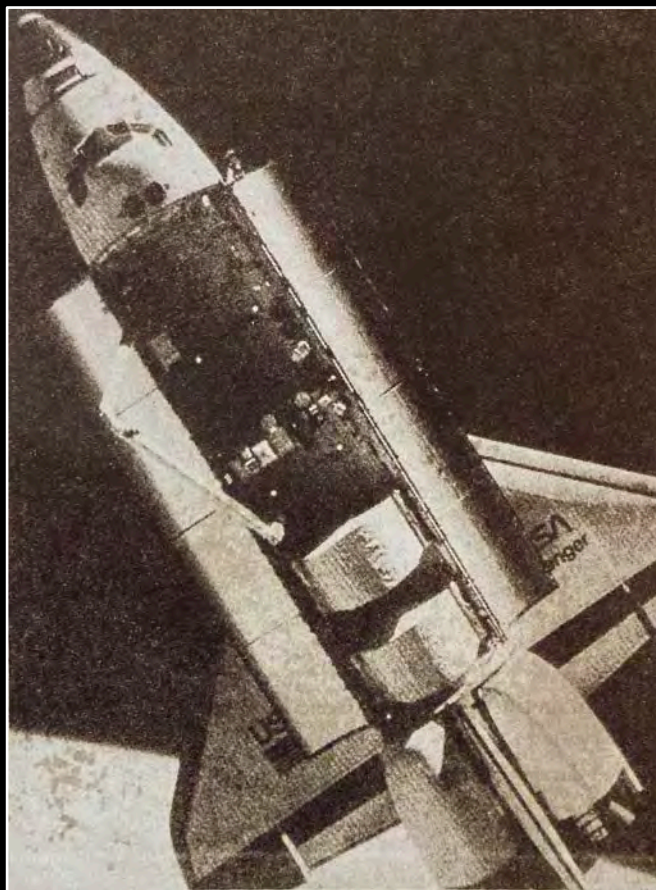


Thomas Ruff, press++01.82, 2015



Thomas Ruff, press++01.21, 2016

Thomas Ruff,
Zeitungsfoto 052,
1990



Thomas Ruff, Zeitungsfoto 112, 1990



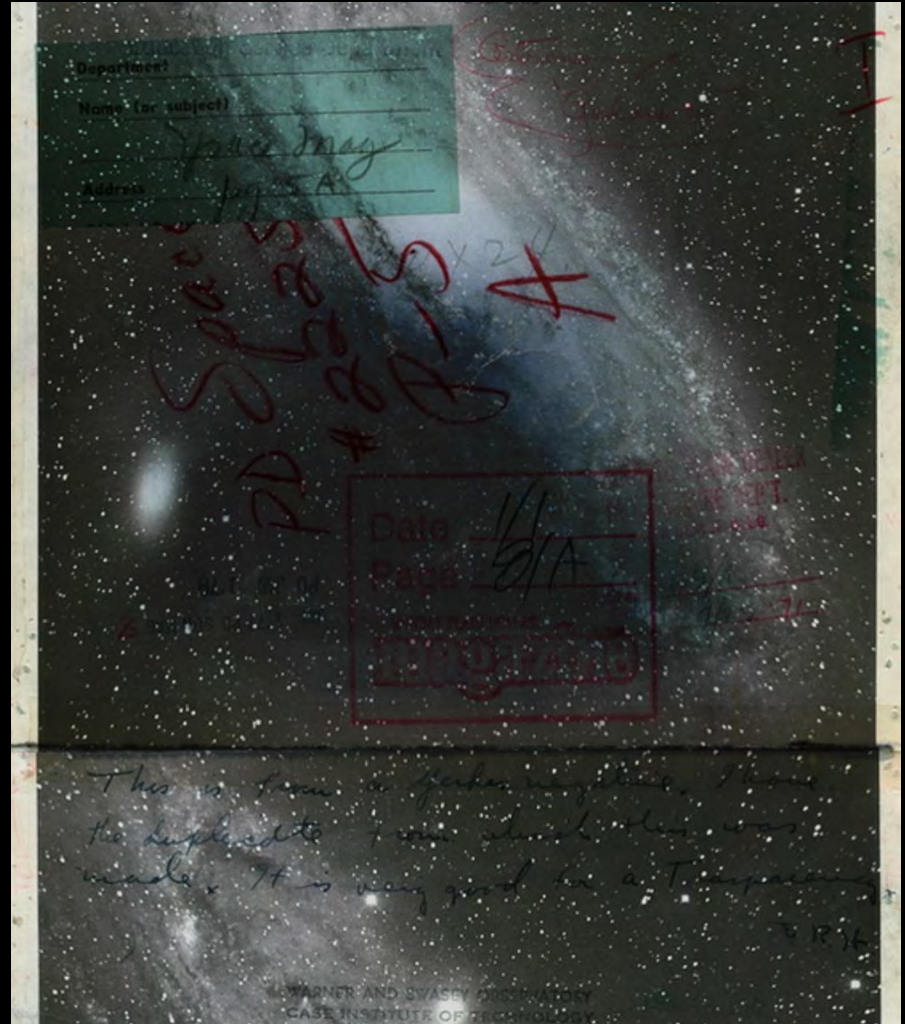
Thomas Ruff, jpeg ea01, 2007



Thomas Ruff, jpeg rl05, 2007



Thomas Ruff, press++01.82, 2015



Thomas Ruff, press++01.21, 2016



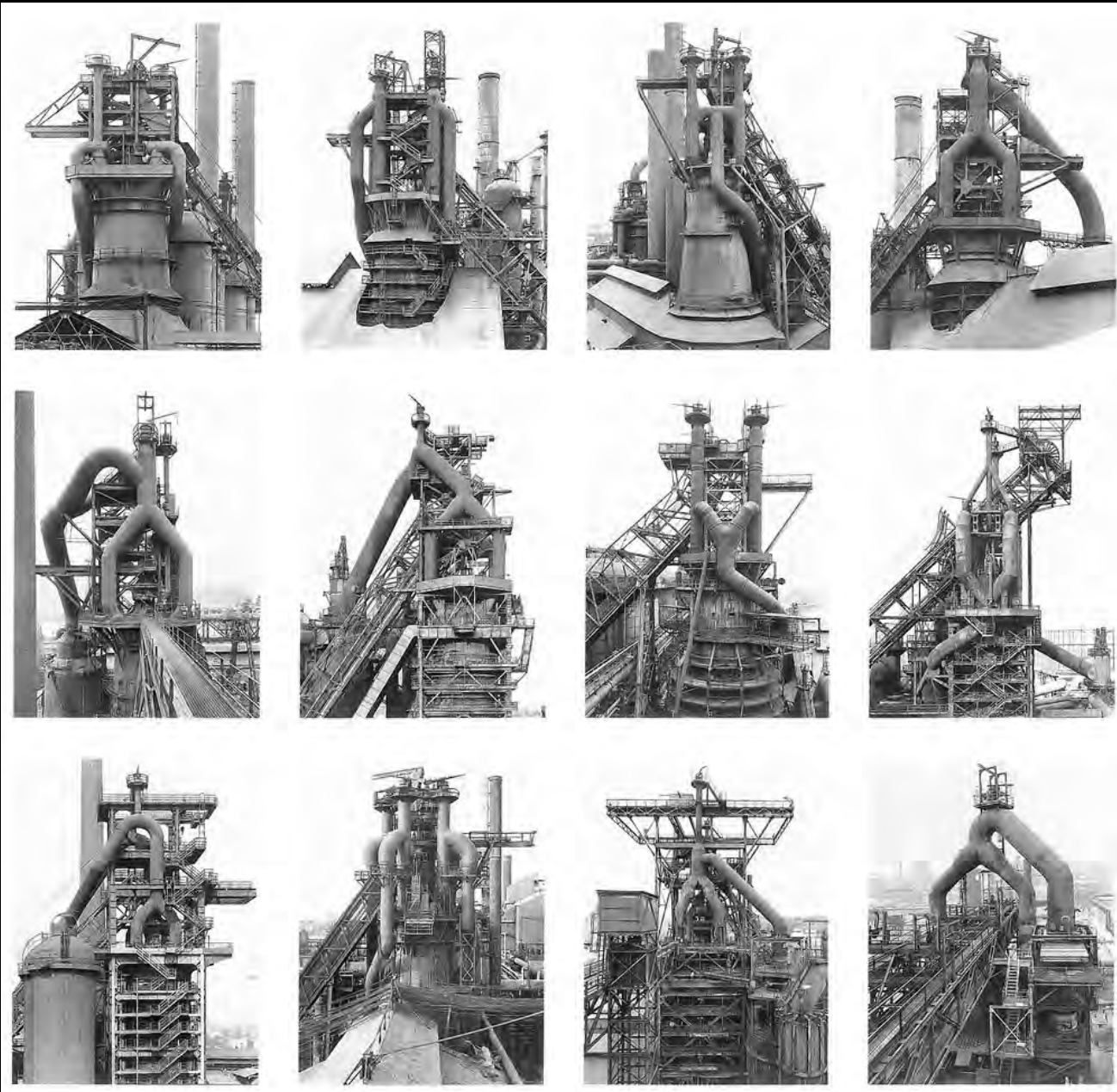
Thomas Ruff, nudes ay02, 2004

I often compare this to the tests made by a scientific researcher. In order to prove his thesis, he must show the evidence of his argument. This is similar to my approach. Every photograph is an assertion I put forward. To prove its correctness and quality, I have to take several photos, and only after a series of these can I say whether I am right or wrong.

Thomas Ruff, 2012

Bernd and Hilla Becher, Water Towers, 1972





Bernd and Hilla Becher, Blast Furnaces,
1965-1992



Georg Baselitz, *The Gleaner*, 1978



Anselm Kiefer, *Your Golden Hair, Margarete*, 1981



Thomas Ruff, Interior (1A), 1979



Thomas Ruff, Interior (3E), 1983



Thomas Ruff, Portrait (L Coevely), 1988



Thomas Ruff, Portrait (S Buch), 1988



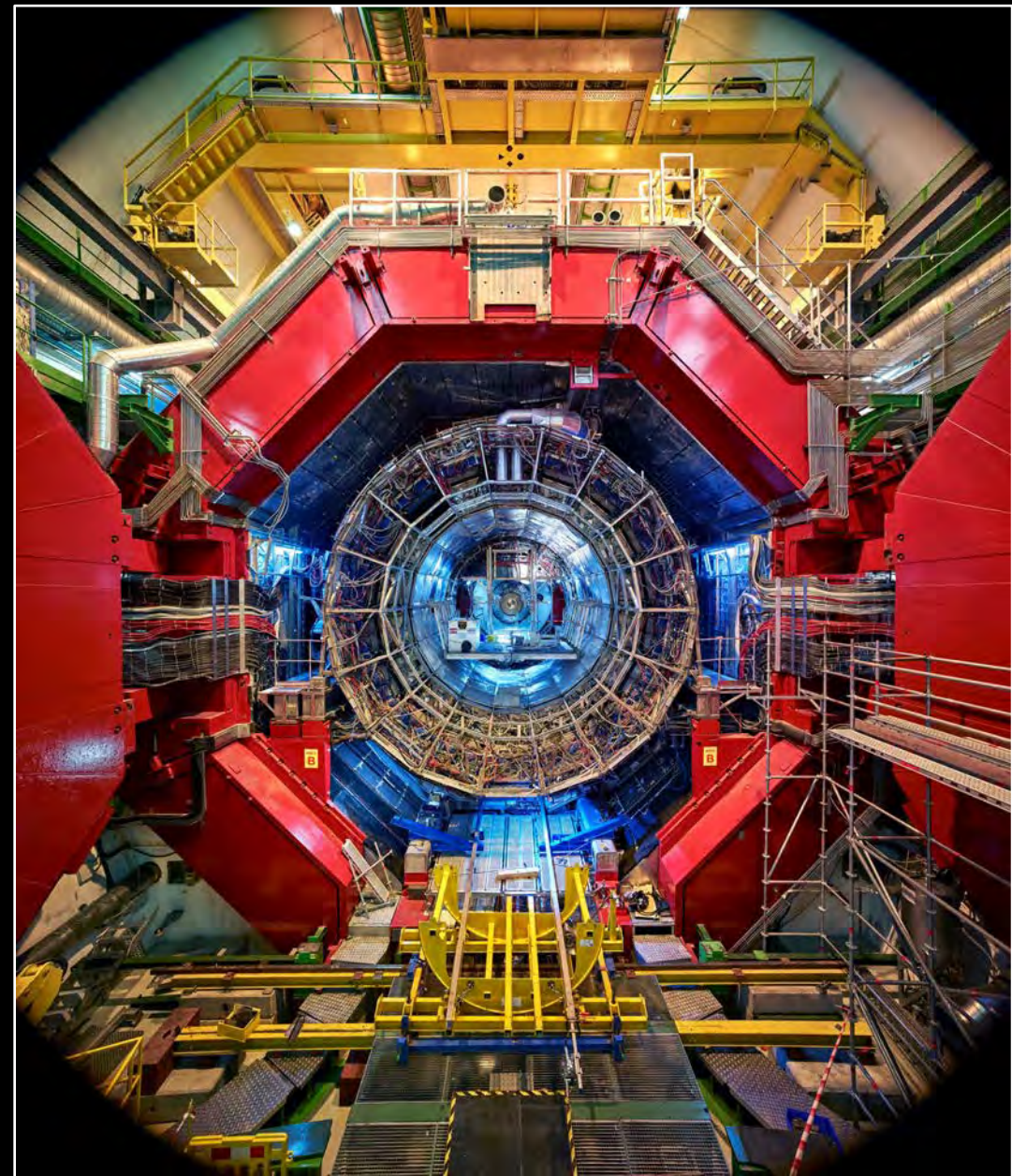
Musée d'art moderne et contemporain de Saint-Étienne Métropole, Saint-Priest-en-Jarez, 2022

Candida Höfer, Royal Portuguese Cabinet
of Reading, Rio de Janeiro, 2005



colour coupler print
140 by 178.4cm.; 55 1/8 by 71 1/4 in.

Thomas Struth, ALICE, CERN,
Saint-Genis-Pouilly, 2019



inkjet print
270.6 x 230 cm.; 106 1/2 x 90 1/2 in.



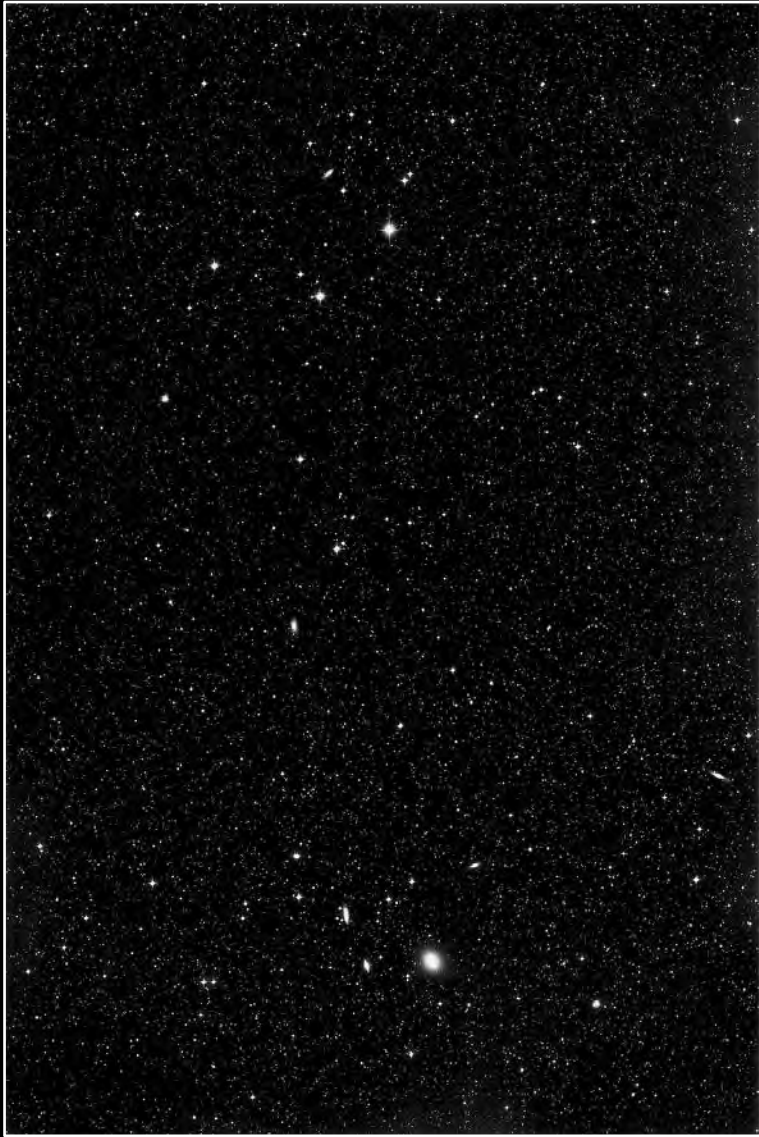
Thomas Ruff, Portrait (P Stadtbäumer), 1988



Thomas Ruff, Portrait (R Huber), 1988



Erik Kessels, 24 hours in Photos, 2011



Thomas Ruff, Stars, 11h 12m/-35°, 1989



Thomas Ruff, Stars, 18h 42m/-75°, 1992



Wolfgang Tillmans, Transit of Venus, 2004

Mediocre photo of the Moon near Hatch residence






Thomas Ruff, Parkett No. 28, 1991

PARKETT NO. 28 1991 KUNSTZEITSCHRIFT / ART MAGAZINE SFR. 25.- / DM 30.- / US\$ 17.50

PARKETT

INSERT: LIZ LARNER



FRANZ GERTSCH THOMAS RUFF

TEXTS ON FRANZ GERTSCH · THOMAS RUFF: NORMAN BRYSON & TREVOR FAIRBROTHER / MIKE DANOFF / HELMUT FRIEDEL / MARK FREIDUS / JÖRG JOHNNEN / ULRICH LOOCK / RAINER MICHAEL MASON / AMEI WALLACH ■ JAMES LEWIS; RICHARD PRINCE / DAVE HICKEY; ON BEAUTY / PAUL TAYLOR; INTERVIEW JAMES ROSENQUIST / PARKETT INQUIRY / UMFRAGE: DAVID LYNCH / CUMULUS AUS EUROPA: CLAUDE RITSCHARD / CUMULUS FROM AMERICA: MARTIN GUTTMANN AND MICHAEL CLEGG

EDITION FOR PARKETT THOMAS RUFF, 1991

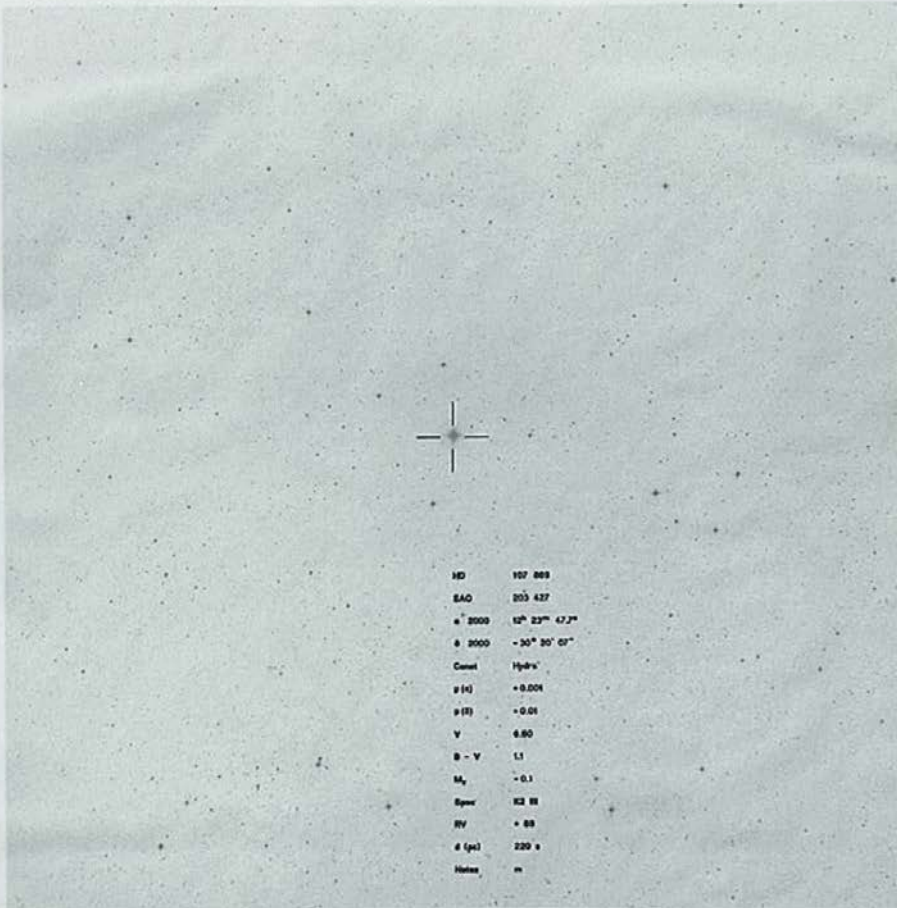
I.	II.	
HD 107 869	NGC 5927	
SAO 203 427	α 2000 15 ^h 26.0 ^m	
δ 2000 12 ^h 23 ^m 47.7 ^s	δ 2000 50 ^h 40 ^m	
δ 2000 -30° 20' 02"	Const. Lupus	
Const. Hydra	Diam. 12.0	
μ(B) +0.001	V 8.33	
μ(R) -0.01	B - V 1.31	
V 6.60	Spec. G2	
B - V 1.1	l (log) 7.4	
M _v -0.1	RV -78	
Spec. K2 III	M _v 7.77	
RV + 69	IR - V _s 0.76	
l (pc) 220 ±	Class. K	
Notes in	[Fe/H] -0.30	

Zwei C-PRINTS, 50 x 50 cm,
IN TRANSPARENTPAPIERHÜLLEN. DIE ASTRONOMISCHEN DATEN SIND
BEIDSEITIG AUF DEN HÜLLEN IN SIEBDRUCK AUFGEDRUCKT.
AUFLAGE VON JE 50 PHOTOS, NUMERIERT UND SIGNIERT.

Two C-PRINTS, 19½ x 19½",
IN TRANSPARENT PAPER WRAPPERS. THE ASTRONOMIC DATA ARE
SILK-SCREENED ON THE FRONT AND BACK OF THE WRAPPERS.
EDITION OF 50 PHOTOS EACH, NUMBERED AND SIGNED.

(PHOTOS: ESO)

PARKETT 28 1991



HD	107 088
SAO	203 437
α 2000	$12^{\text{h}} 23^{\text{m}} 47.7^{\text{s}}$
δ 2000	$-30^{\circ} 30' 03''$
Const	Hydr
μ (A)	+0.001
μ (D)	-0.01
V	6.80
B - V	1.1
M_v	-0.1
Spec	K2 III
RV	+ 88
d (pc)	220 ±
Notes	m



688 70 34
689 70 34
710 713 70 688 4
711 713 70 688 4
712 713 70 688 4
713 713 70 688 4
714 713 70 688 4
715 713 70 688 4
716 713 70 688 4
717 713 70 688 4
718 713 70 688 4
719 713 70 688 4
720 713 70 688 4
721 713 70 688 4
722 713 70 688 4
723 713 70 688 4
724 713 70 688 4
725 713 70 688 4
726 713 70 688 4
727 713 70 688 4
728 713 70 688 4
729 713 70 688 4
730 713 70 688 4
731 713 70 688 4
732 713 70 688 4
733 713 70 688 4
734 713 70 688 4
735 713 70 688 4
736 713 70 688 4
737 713 70 688 4
738 713 70 688 4
739 713 70 688 4
740 713 70 688 4
741 713 70 688 4
742 713 70 688 4
743 713 70 688 4
744 713 70 688 4
745 713 70 688 4
746 713 70 688 4
747 713 70 688 4
748 713 70 688 4
749 713 70 688 4
750 713 70 688 4
751 713 70 688 4
752 713 70 688 4
753 713 70 688 4
754 713 70 688 4
755 713 70 688 4
756 713 70 688 4
757 713 70 688 4
758 713 70 688 4
759 713 70 688 4
760 713 70 688 4
761 713 70 688 4
762 713 70 688 4
763 713 70 688 4
764 713 70 688 4
765 713 70 688 4
766 713 70 688 4
767 713 70 688 4
768 713 70 688 4
769 713 70 688 4
770 713 70 688 4
771 713 70 688 4
772 713 70 688 4
773 713 70 688 4
774 713 70 688 4
775 713 70 688 4
776 713 70 688 4
777 713 70 688 4
778 713 70 688 4
779 713 70 688 4
780 713 70 688 4
781 713 70 688 4
782 713 70 688 4
783 713 70 688 4
784 713 70 688 4
785 713 70 688 4
786 713 70 688 4
787 713 70 688 4
788 713 70 688 4
789 713 70 688 4
790 713 70 688 4
791 713 70 688 4
792 713 70 688 4
793 713 70 688 4
794 713 70 688 4
795 713 70 688 4
796 713 70 688 4
797 713 70 688 4
798 713 70 688 4
799 713 70 688 4
800 713 70 688 4

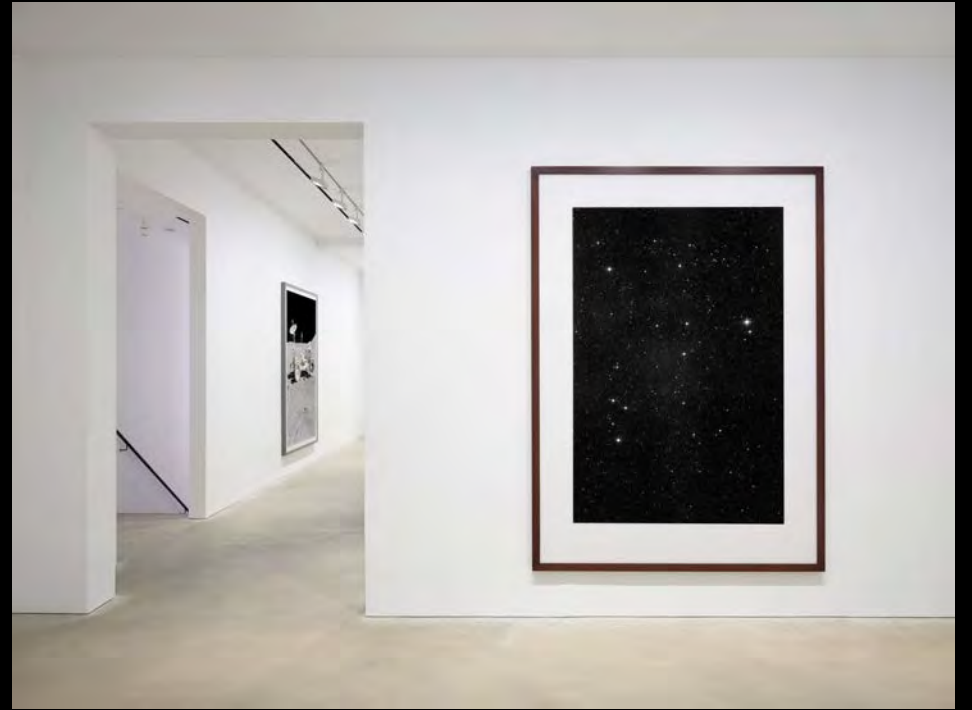




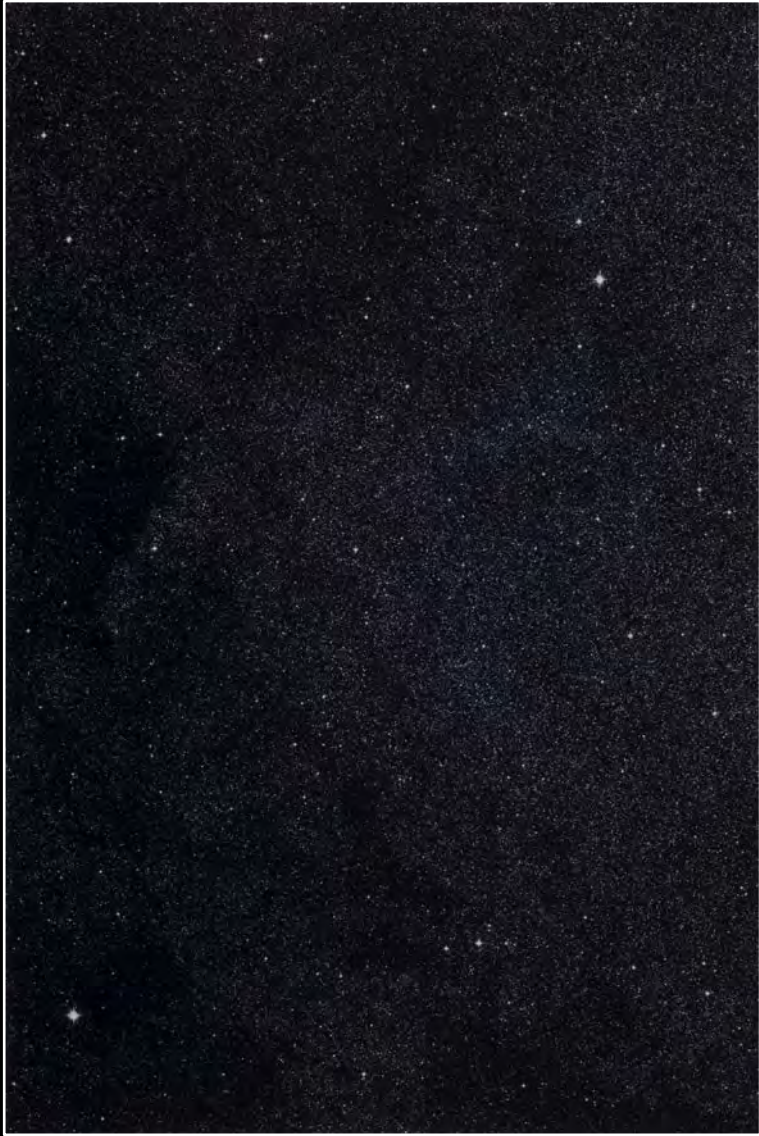
Thomas Ruff, Stars, 20h 00m/-35°-1992



Thomas Ruff, Stars, 17h 15m/-30°, 1990



David Zwirner Gallery, Hong Kong, 2019



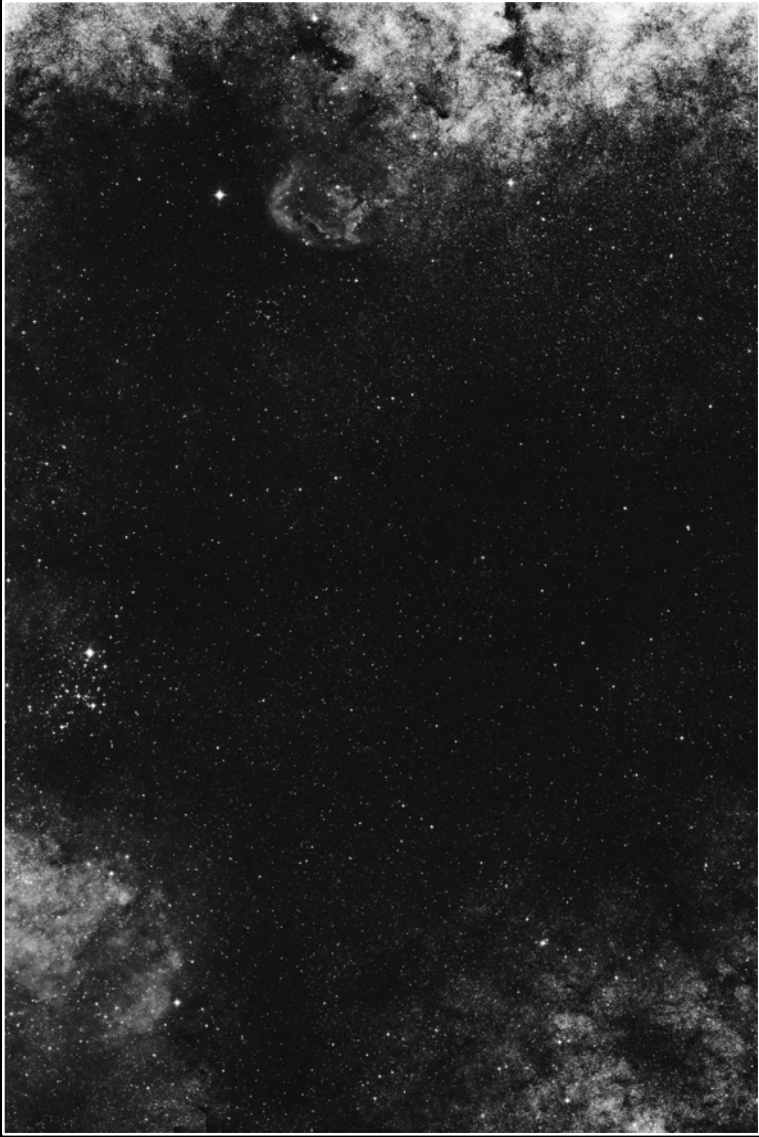
Thomas Ruff, Stars, 17h 16m/-45°, 1990



Thomas Ruff, Stars, 16h 30m/-50°, 1989



Lia Rumma Gallery, Naples, 1991



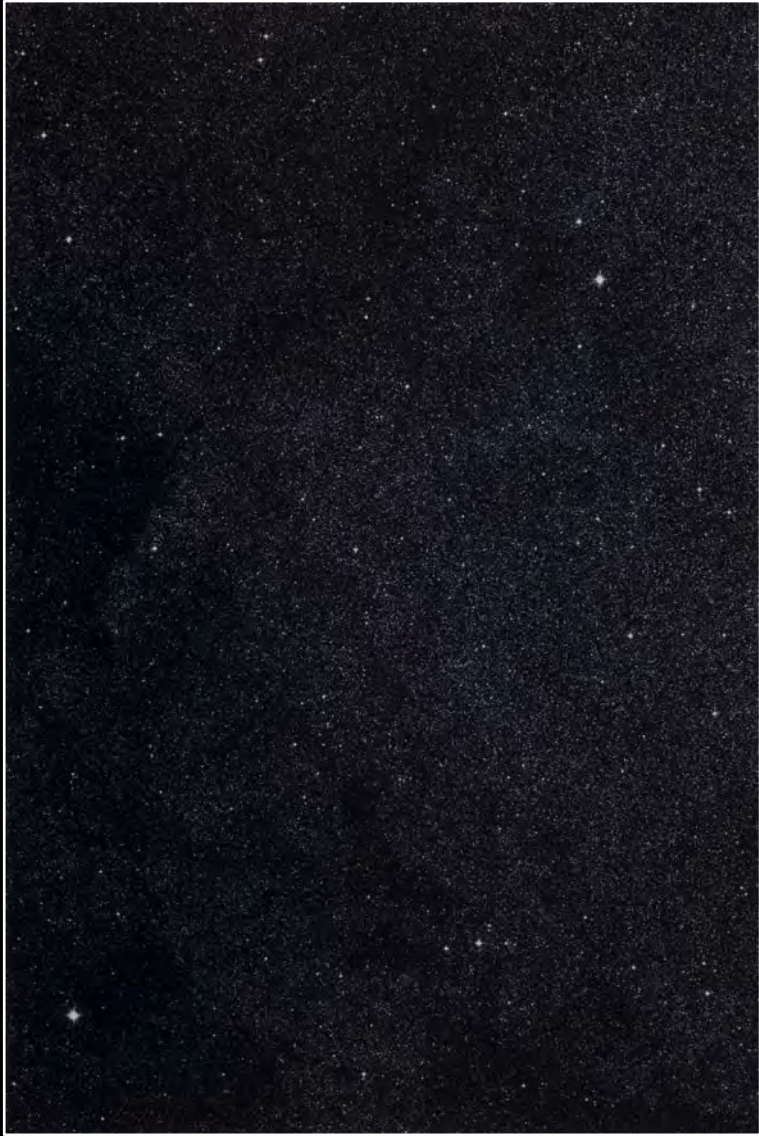
Thomas Ruff, Stars, 17h 38m/-30°, 1990



Thomas Ruff, Stars, 03h 09m/-20°, 1990

The first images I displayed in my studio horizontally, but it wasn't satisfying. The horizontal format is a window, but the images I had in mind weren't a window. I wanted the door, suggesting, "Put on a helmet, go out into space, become a Captain Kirk." That's why I made them vertical and as big as possible.

Thomas Ruff, 2005



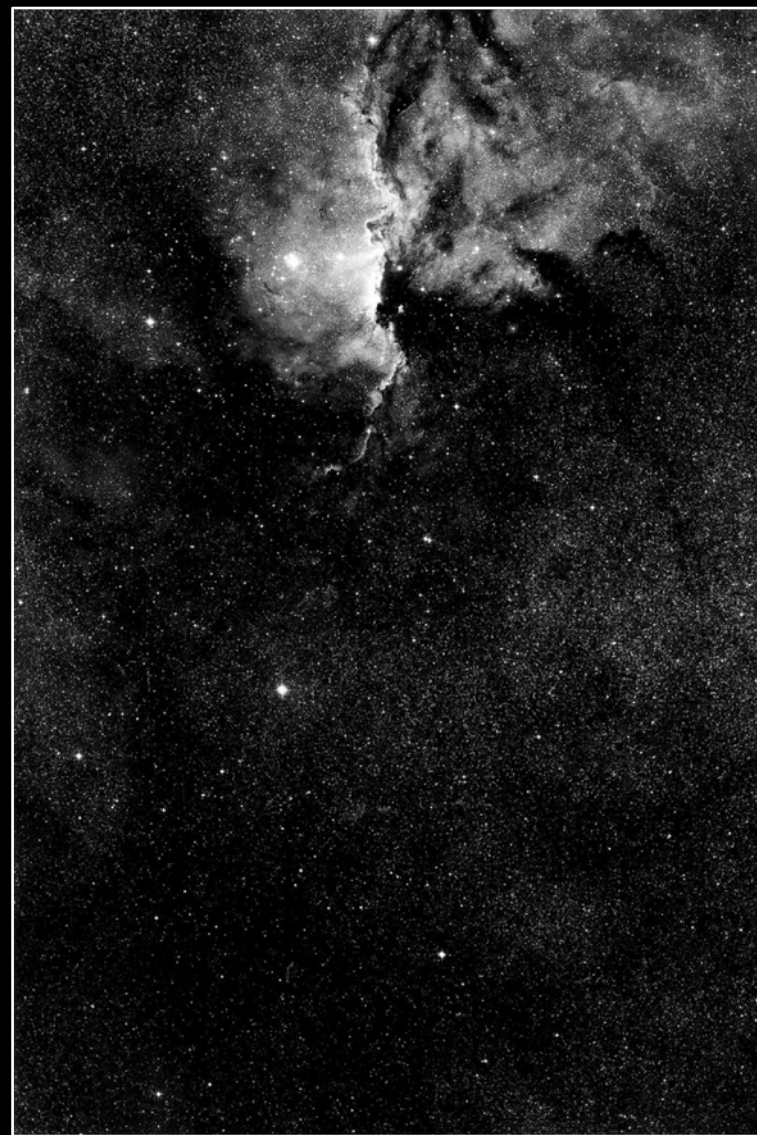
Thomas Ruff, Stars, 17h 16m/-45°, 1990



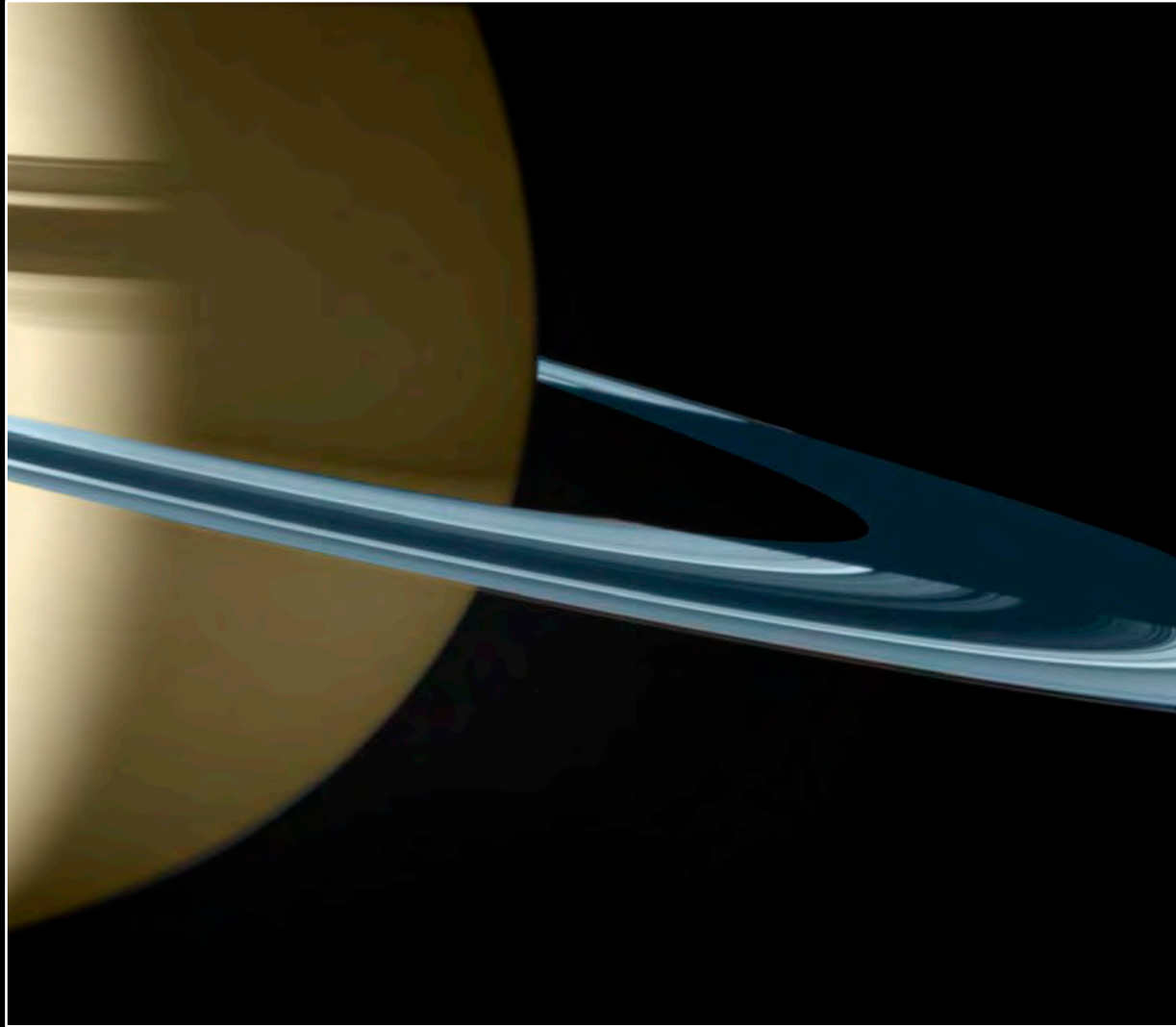
Thomas Ruff, Stars, 16h 30m/-50°, 1989



Ni Youyu, Dust ,2016

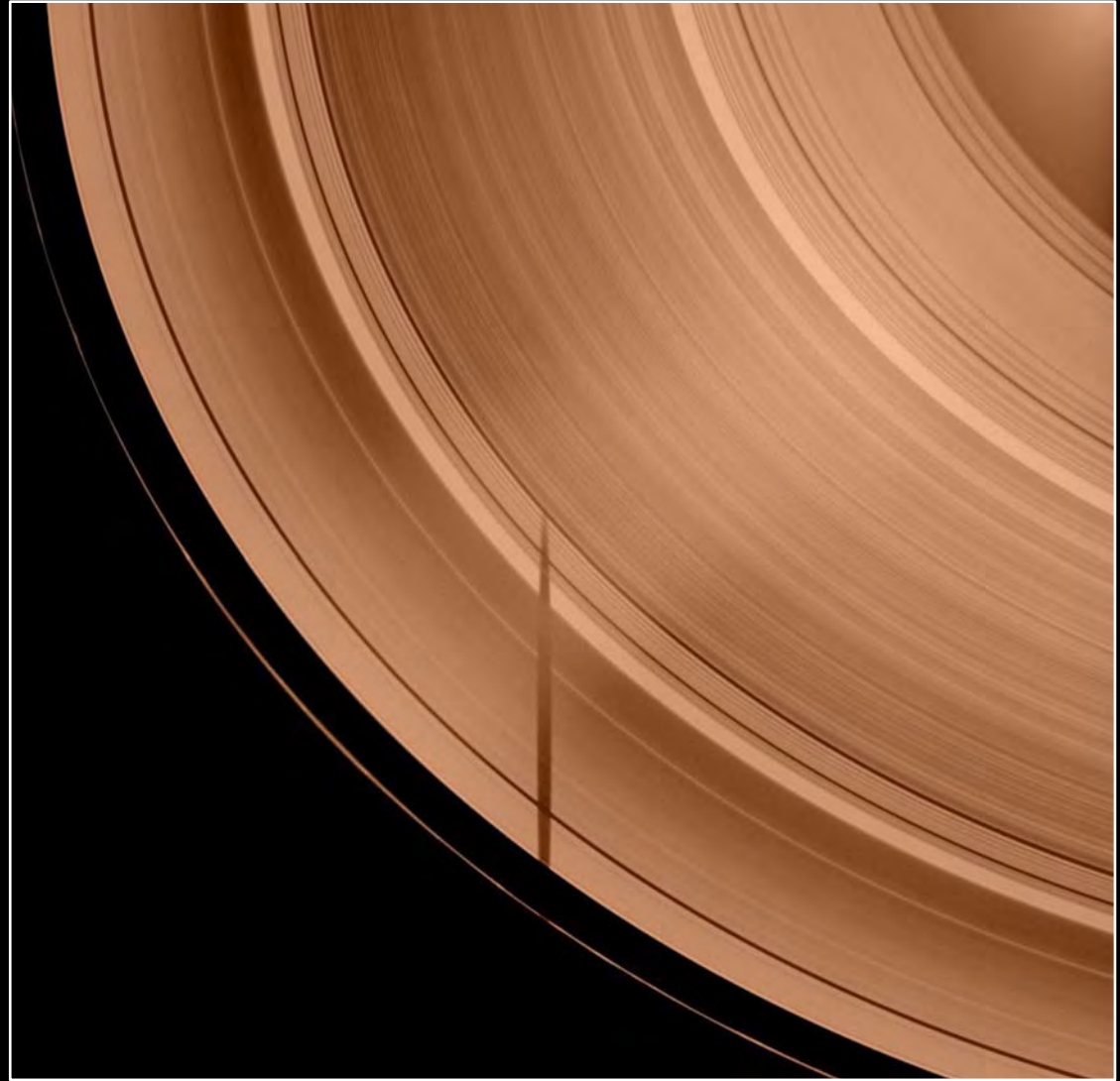


Thomas Ruff, Stars, 16h 30m/-50°, 1989



Thomas Ruff, Cassini 10, 2009

Thomas Ruff, Cassini 31, 2009



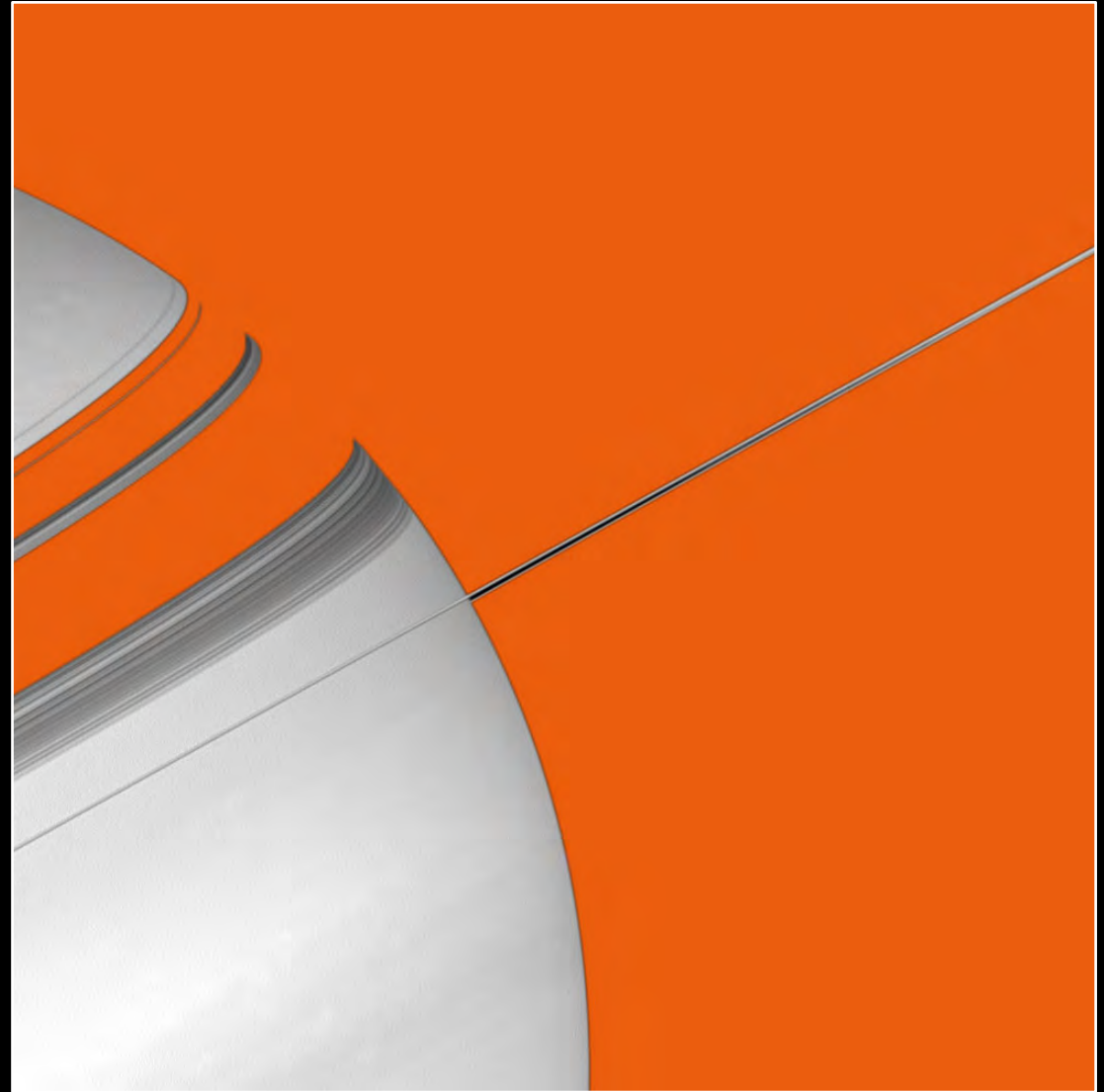


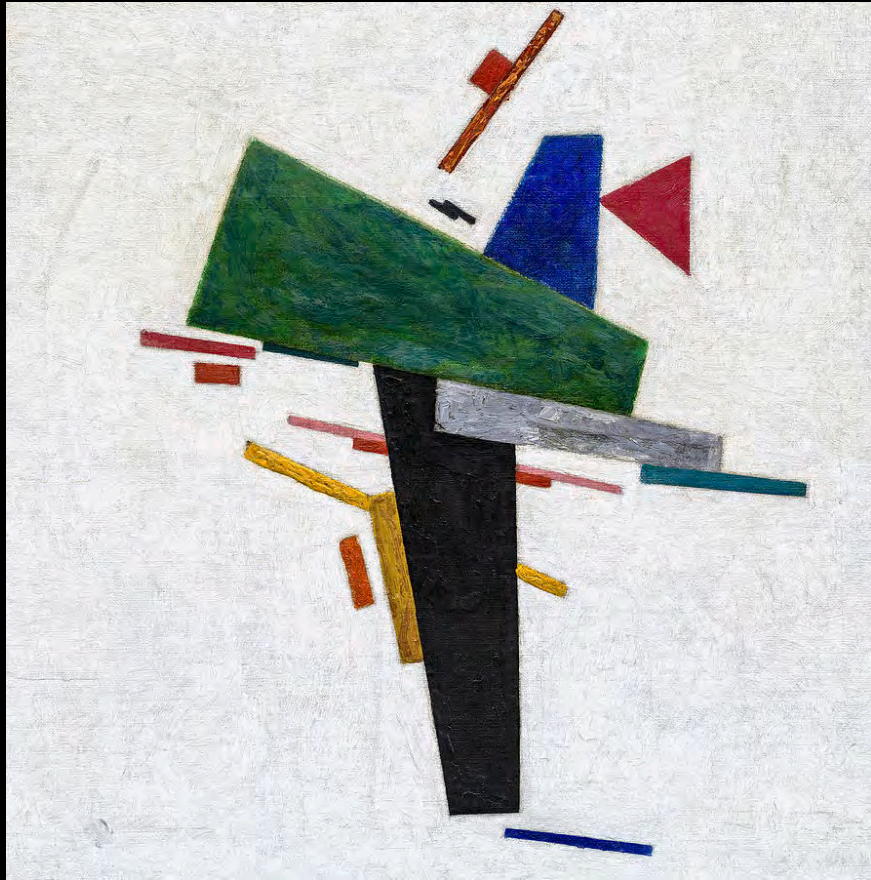
Thomas Ruff, Cassini 24, 2009



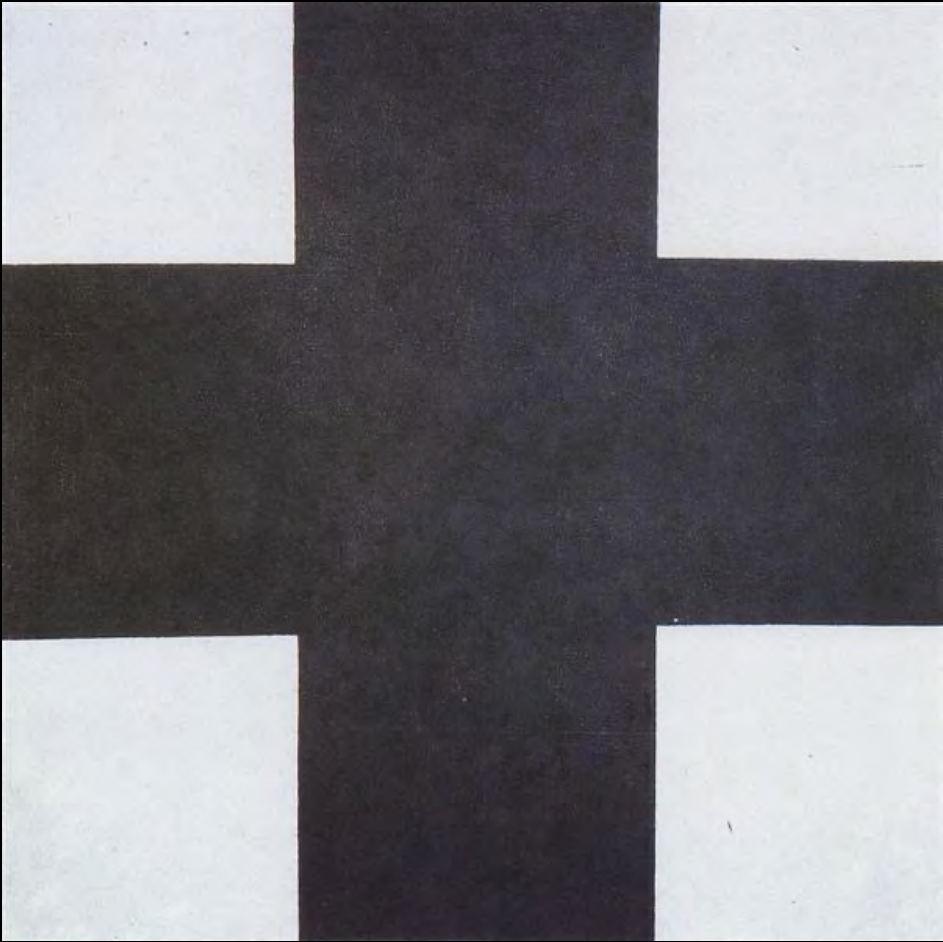
Mai 36 Gallery, Zurich, 2021

Thomas Ruff, Cassini 16, 2008

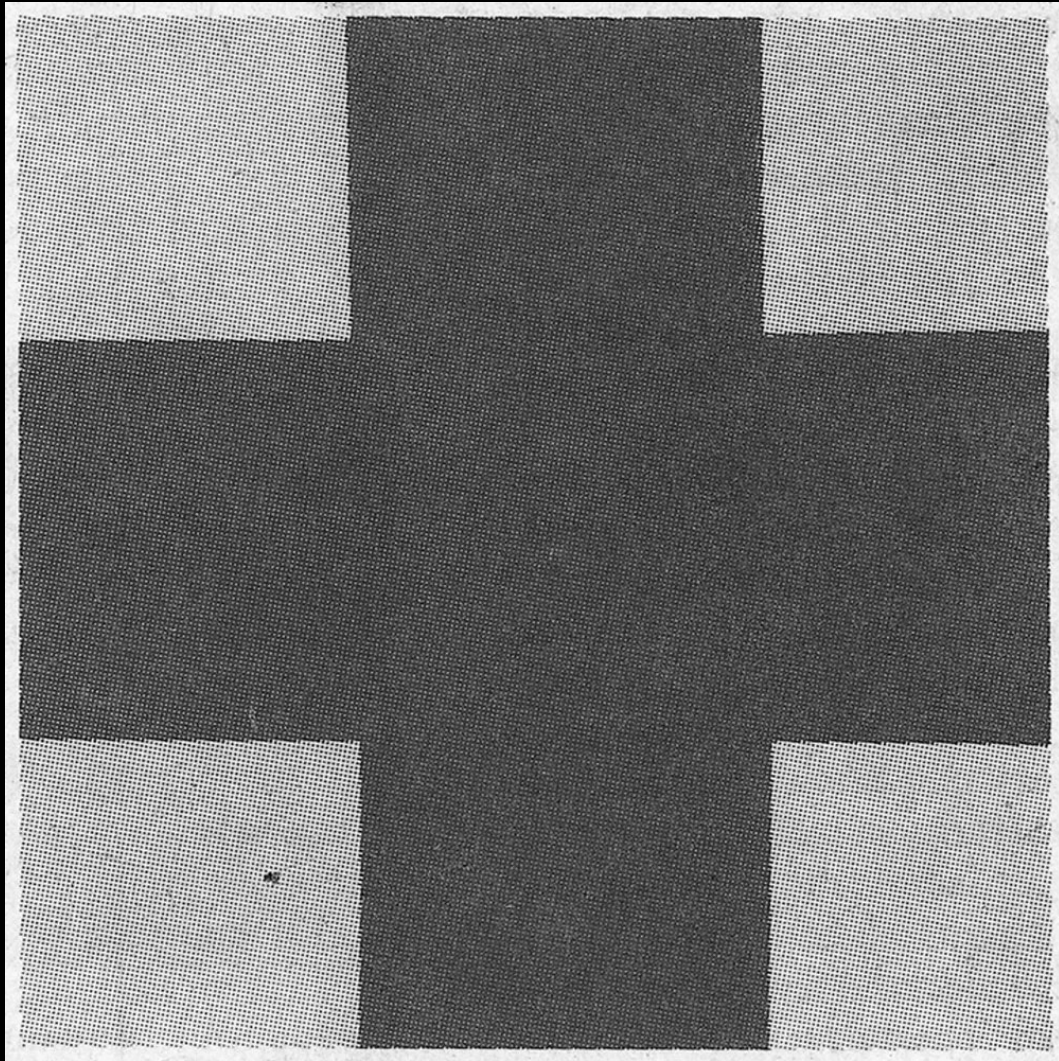




Kazimir Malevich, Suprematist Construction, 1915-16

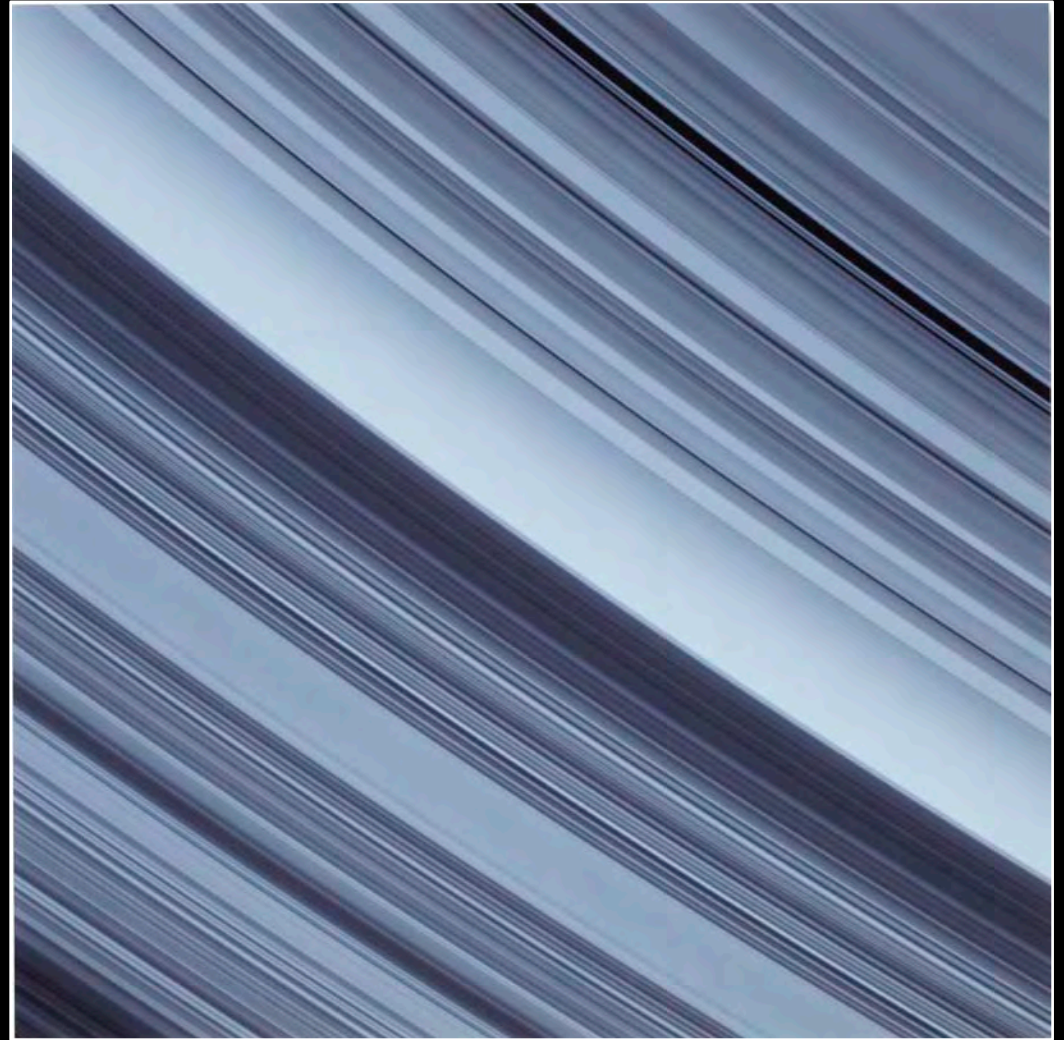


Kazimir Malevich, Black Cross, 1923

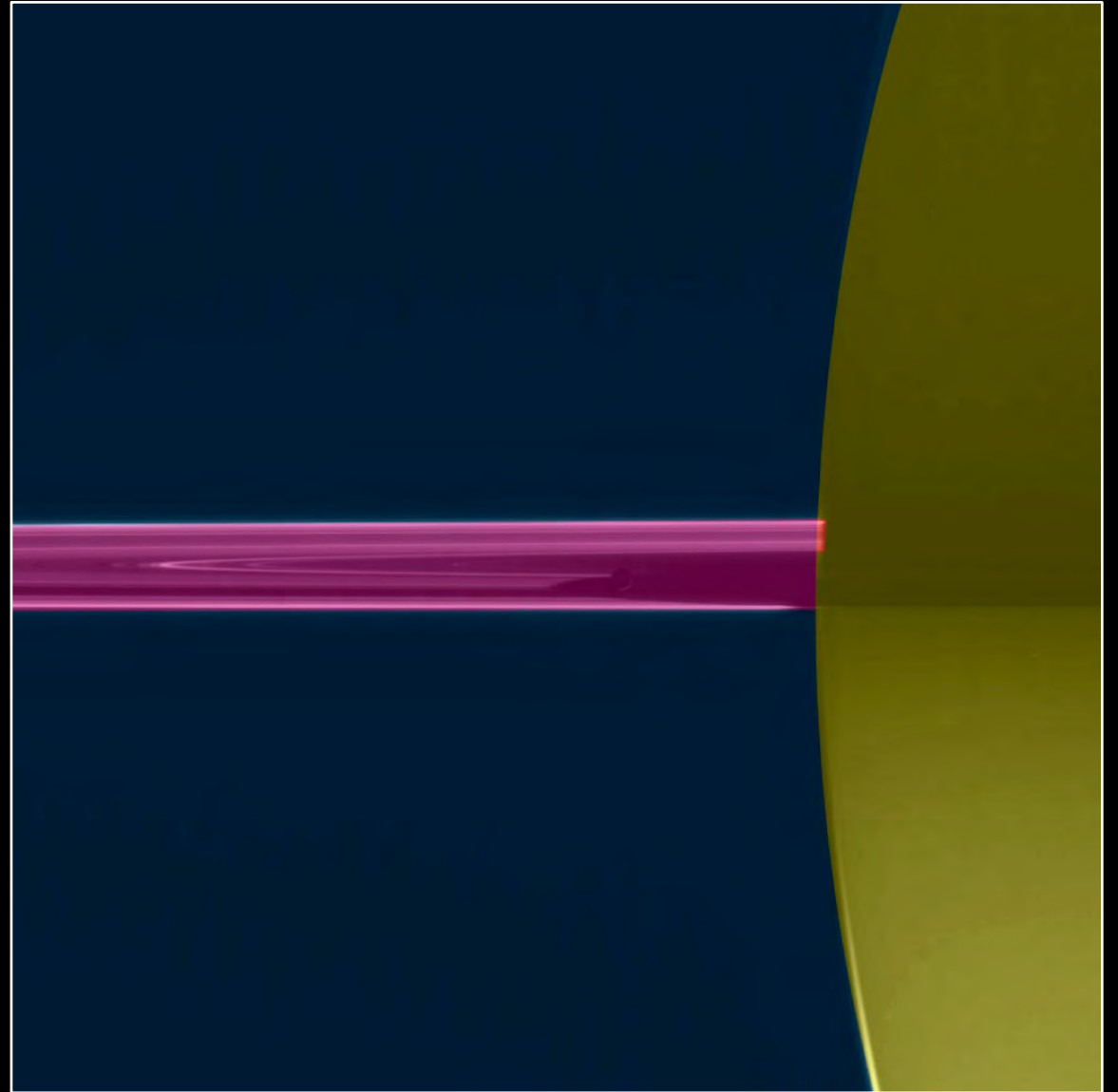


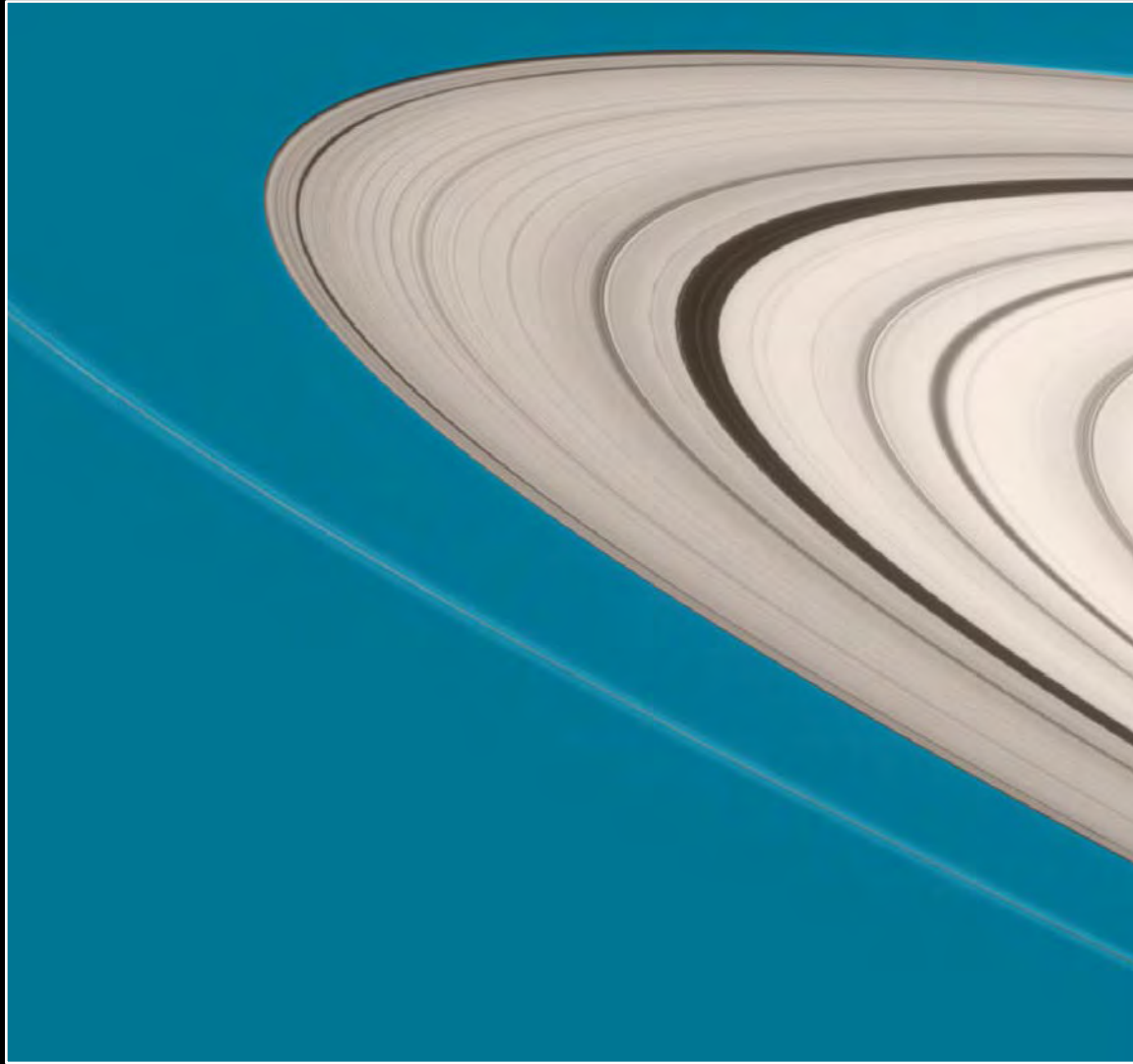
Thomas Ruff, Zeitungsfoto 013, 1990

Thomas Ruff, Cassini 14, 2009



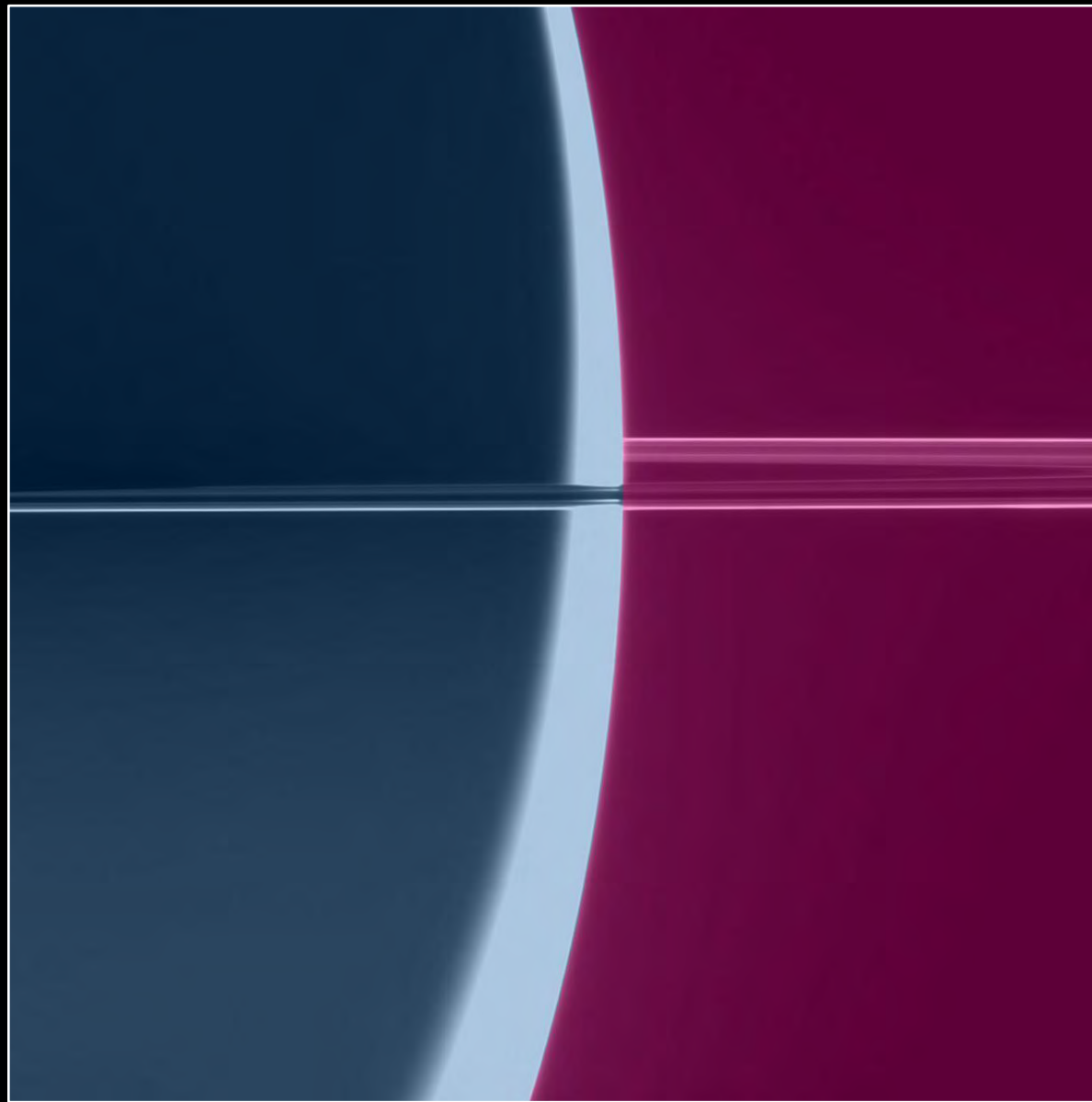
Thomas Ruff, Cassini 06, 2008

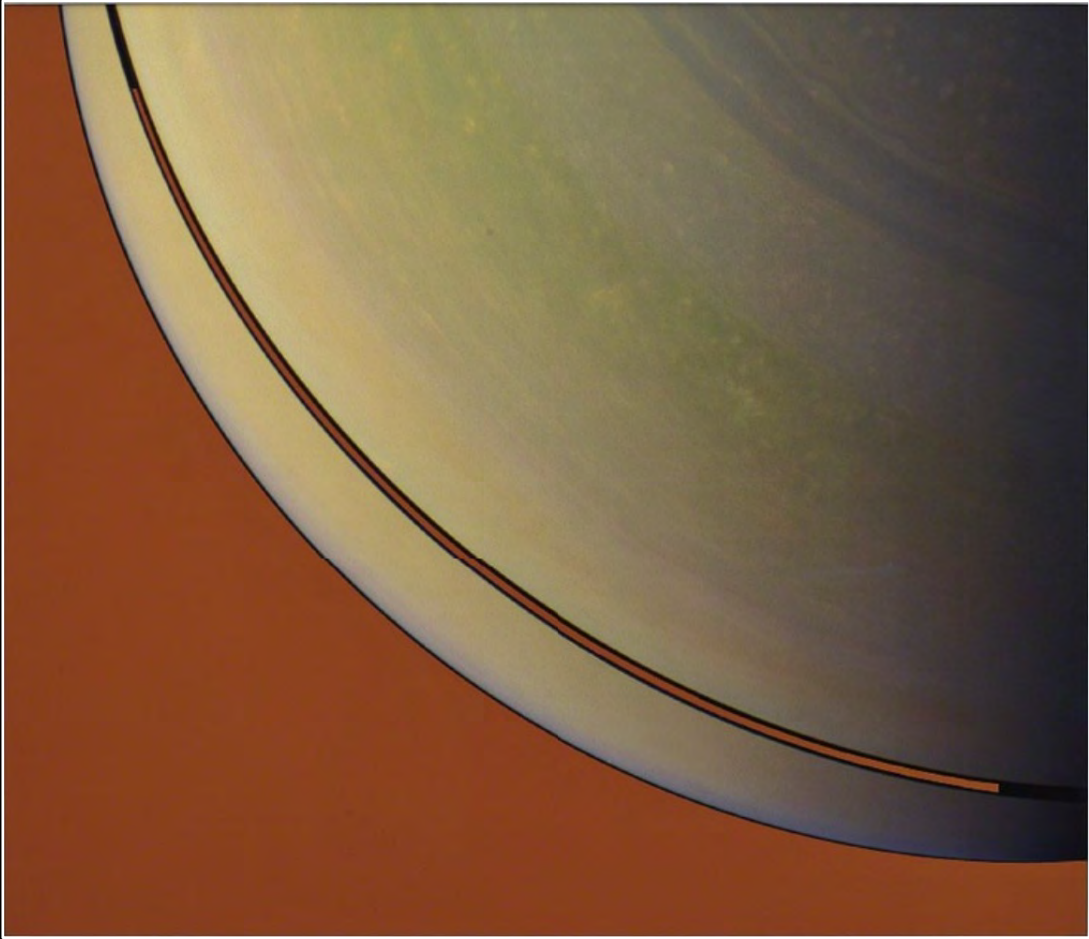




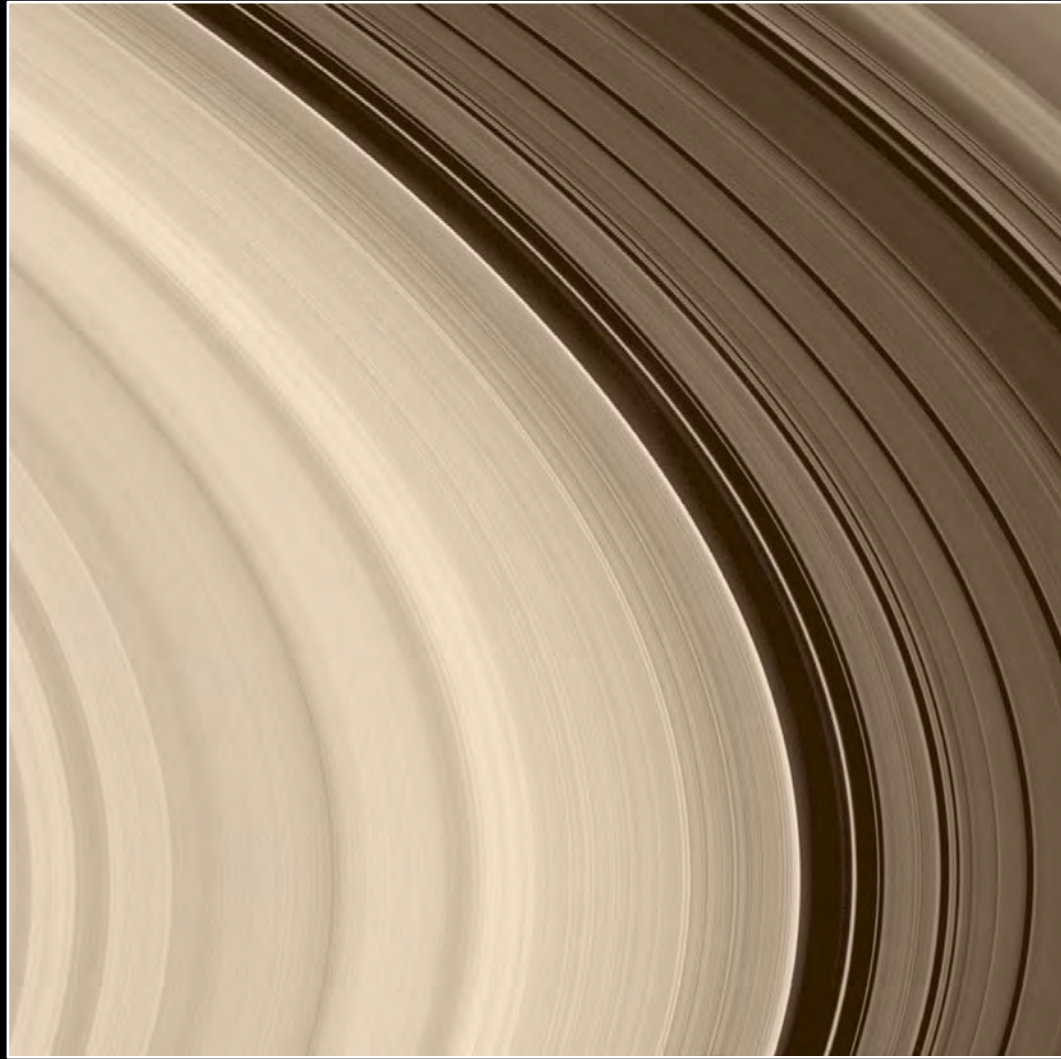
Thomas Ruff, Cassini 17, 2009

Thomas Ruff, Cassini 1, 2008



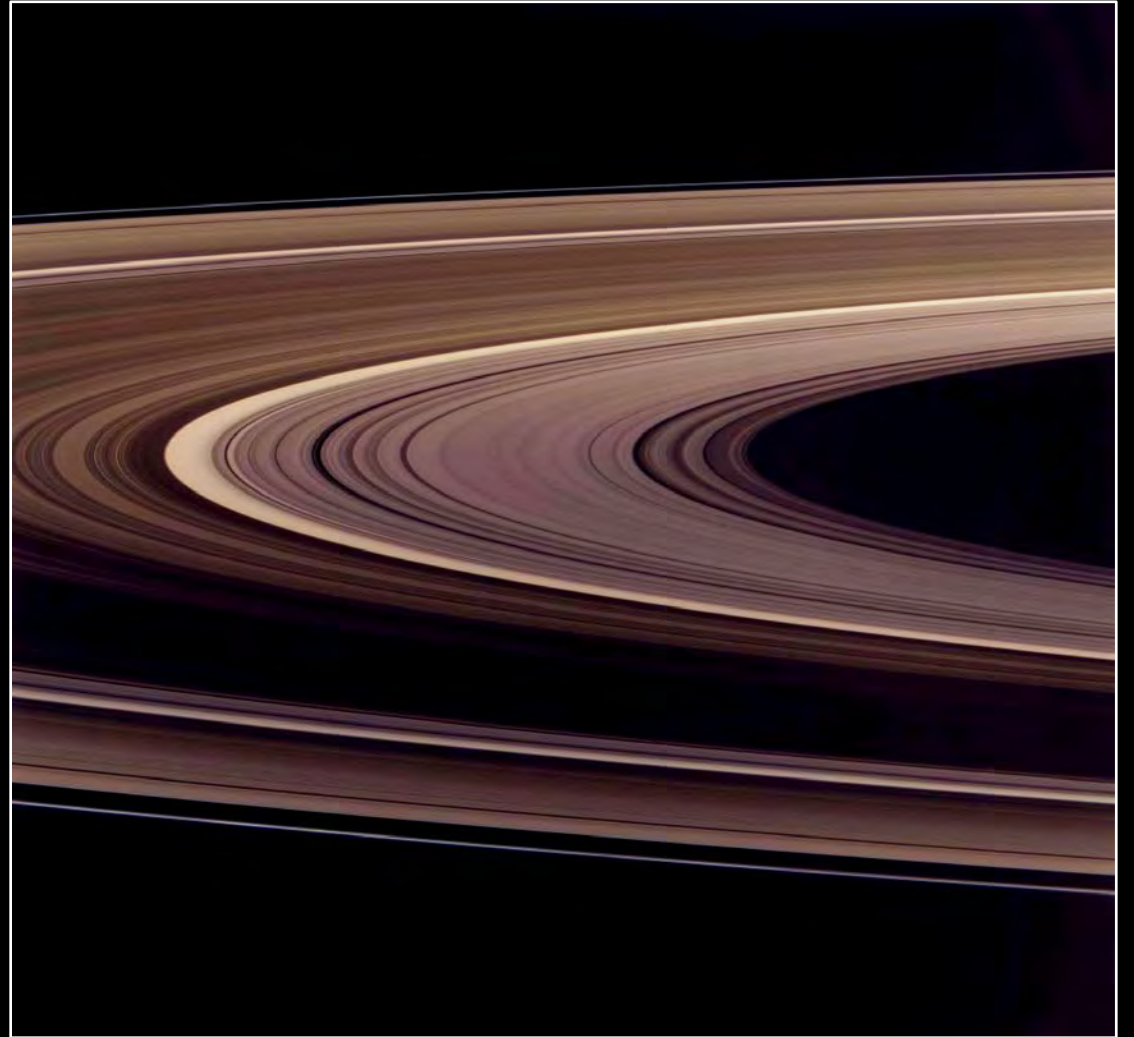


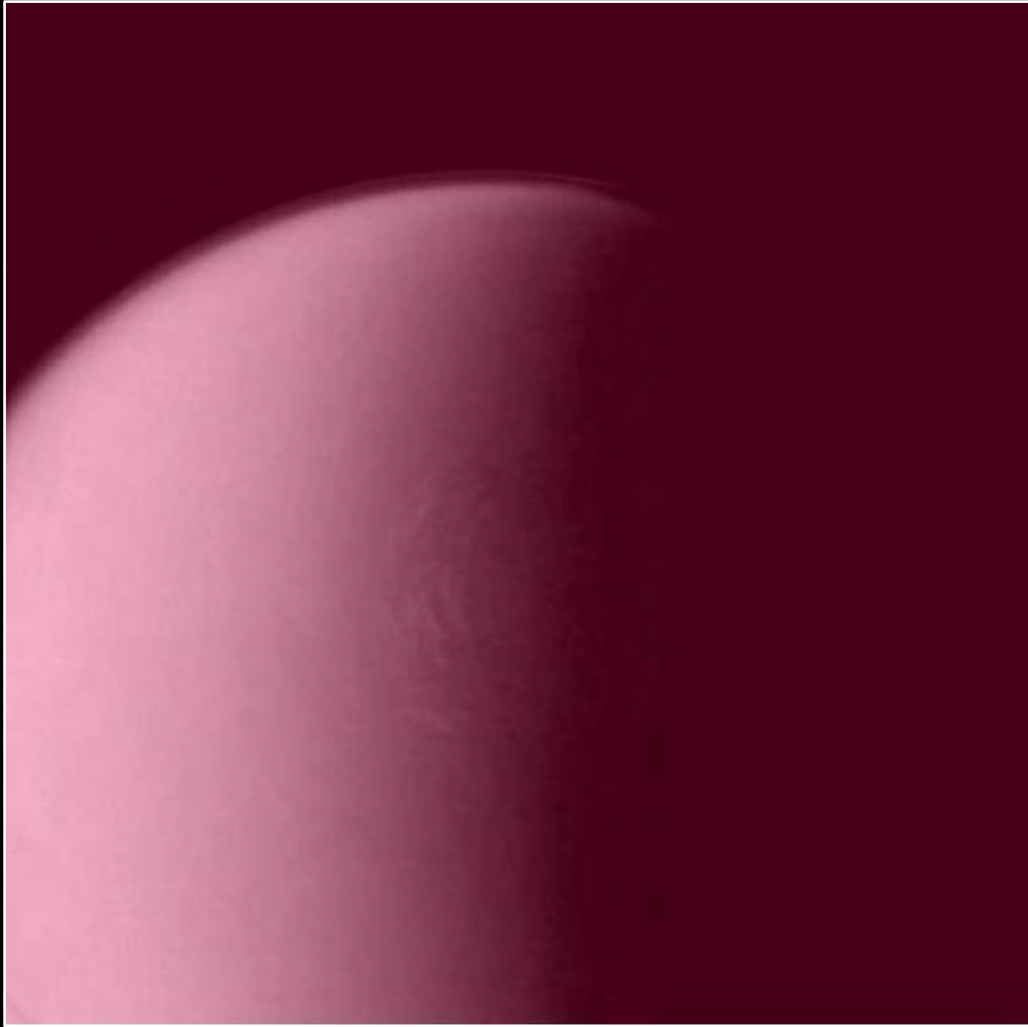
Thomas Ruff, Cassini 33, 2009



Thomas Ruff, Cassini 03, 2008

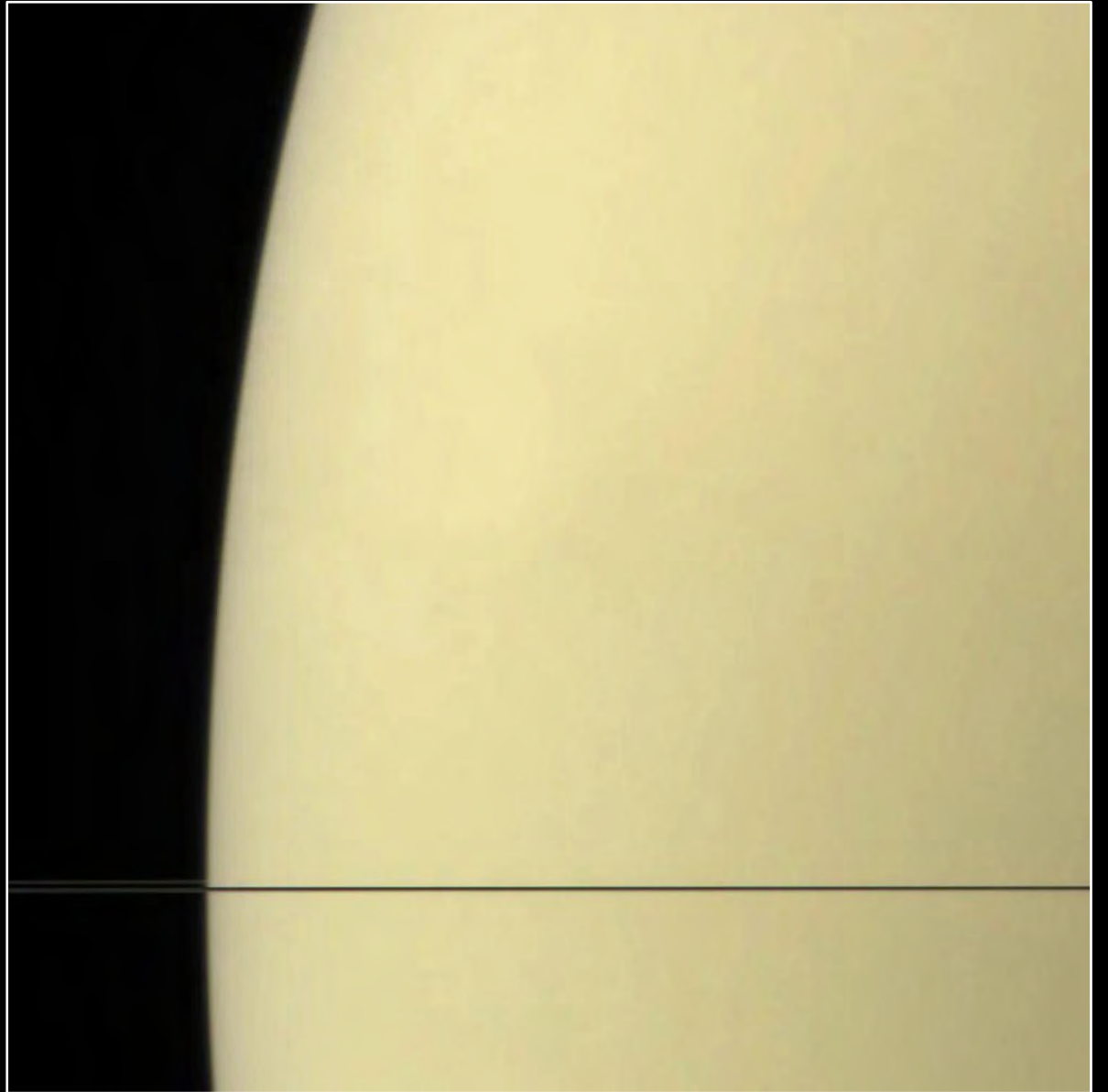
Thomas Ruff, Cassini 08, 2008





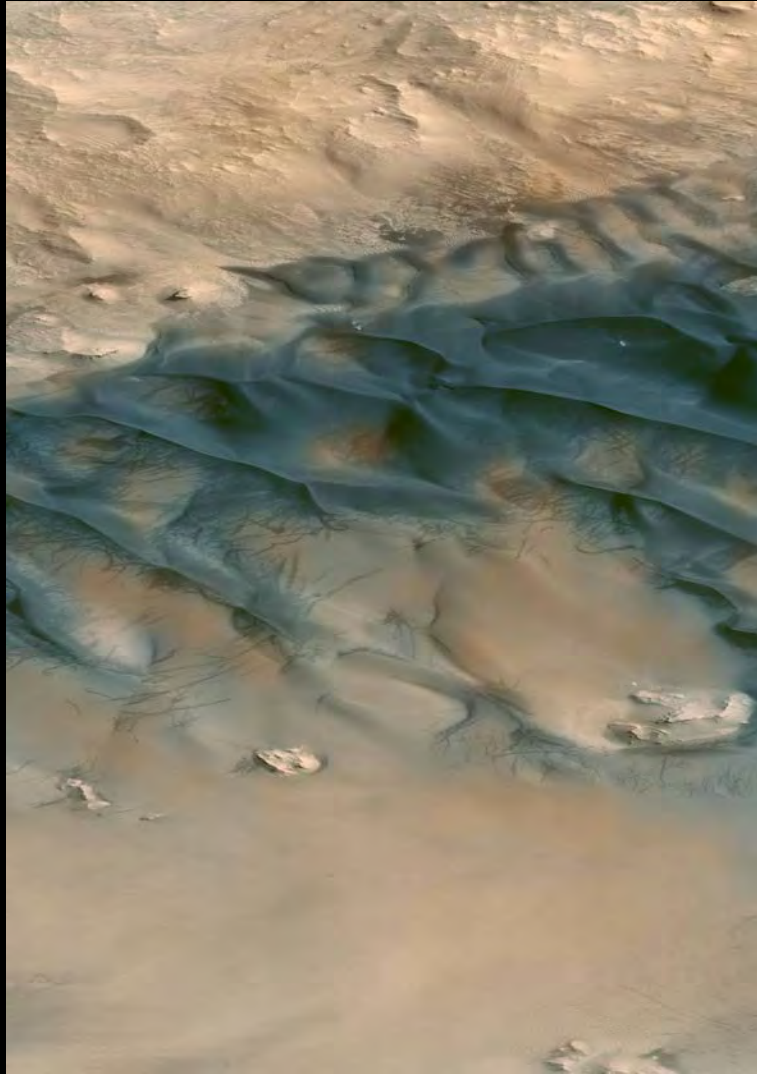
Thomas Ruff, Cassini 26, 2009

Thomas Ruff, Cassini 02, 2008

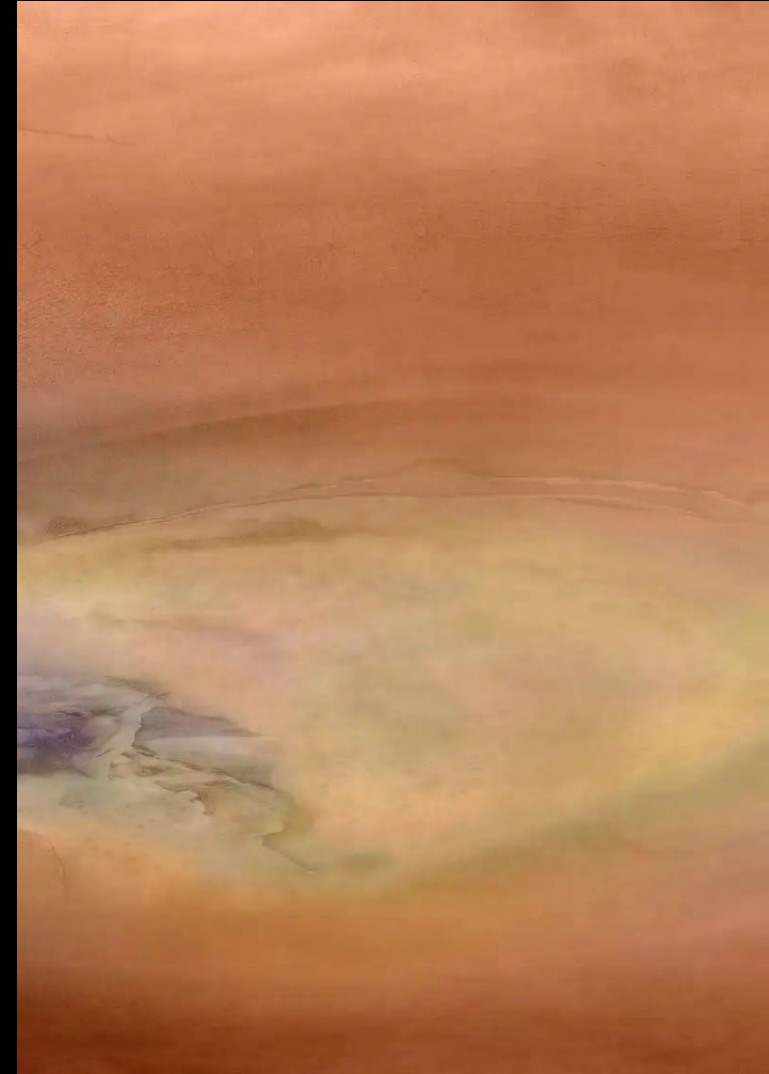




Thomas Ruff, Cassini 39, 2011



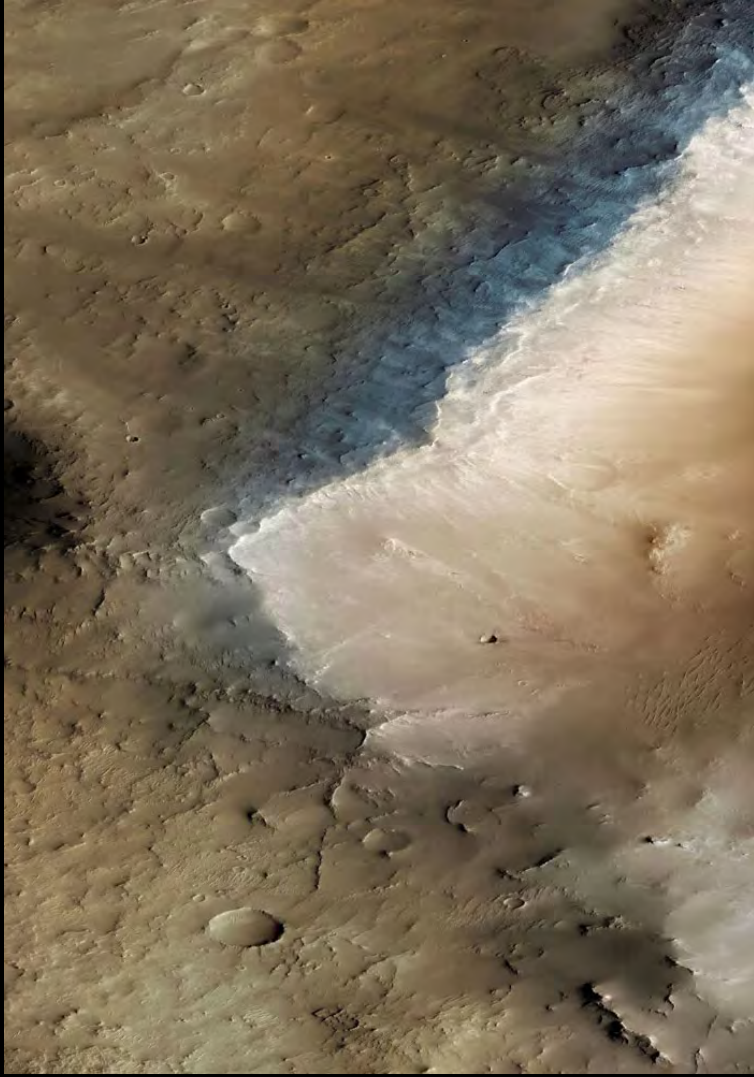
Thomas Ruff, ma.r.s. 15, 2011



Thomas Ruff, ma.r.s. 01 III, 2011

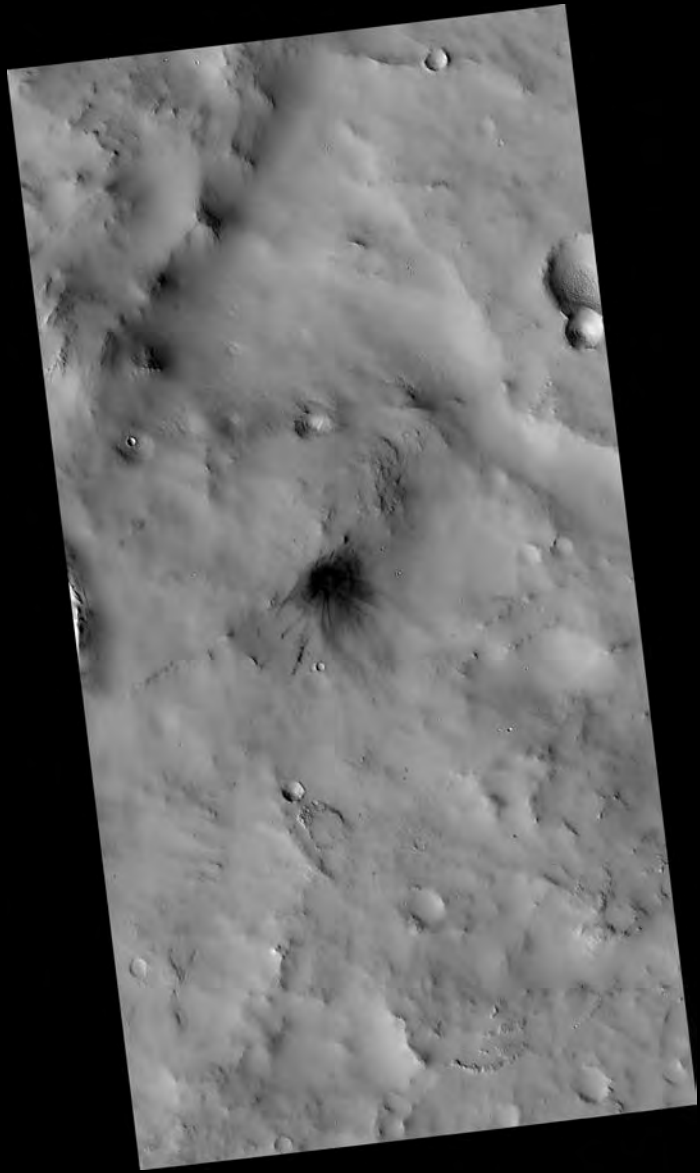
NASA's pictures are all very high resolution, and there are countless images on their website. No wonder it's the most popular site for images of space. The European Space Agency, for instance, is not as accessible. But NASA puts everything into public domain, and the issue of copyright doesn't exist for them—perhaps because machines took all of the images and machines cannot have a copyright.

Thomas Ruff, 2013

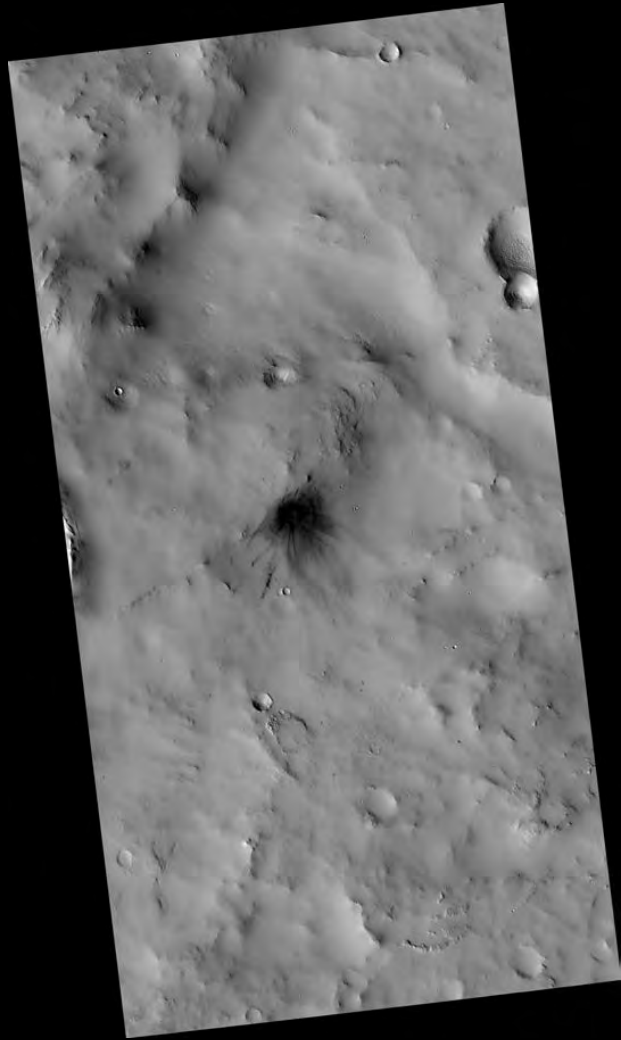


Originally, ma.r.s. was made for my own private purposes. At first, I did not have the idea that it would become a new series. I was looking around NASA's homepage, found the images made with the HiRISE camera (High Resolution Image Science Experiment), and I was blown away when I saw the image resolution. I then started to play with them.

Thomas Ruff, ma.r.s. 10, 2011



The images come in long strips, and they're black and white. I wanted to have them in colour. I sent an email to the people at the University of Arizona and asked: "Why aren't you producing the images in colour?" Their response: "Too much data." Colour would be four times the amount of data. Since they were producing so many images, this would have resulted in bottlenecks when transmitting the data.



PSP_003101_2065, 26 March 2007



Thomas Ruff, ma.r.s. 08 III, 2012

So I added colour to the images myself. I don't remember why, but I also compressed them, and something strange happened: Suddenly, there appeared a pseudo perspective. It didn't look as if you were viewing from the orbit. Instead it looked like a view from a plane. As a science fiction fan I liked that, because that's the view the first human is going to have in 20, 30 or 40 years. At some point I started thinking I had something interesting. I had between five or ten images, and I really liked them. That then became ma.r.s.

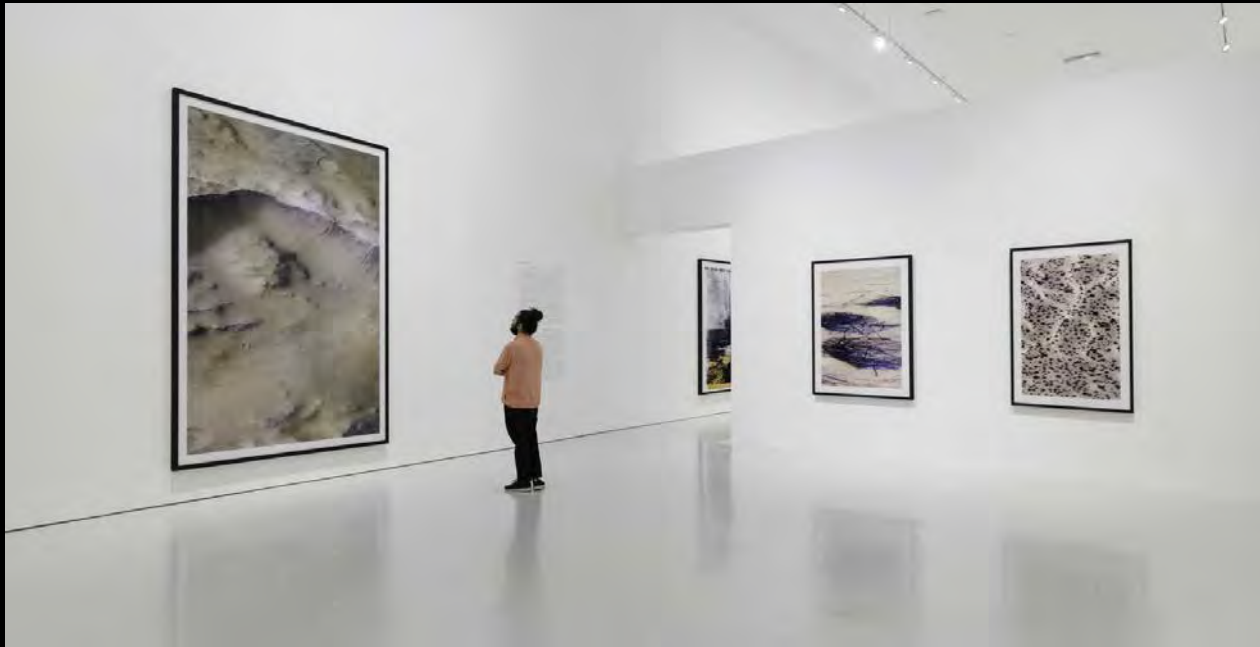
Everybody looking at the pictures tells me "Thomas, you're interested in painting here." But no, it's not about painting. I'm interested in realism. The images are very realistic simply because of the precision of the camera. But at the same time, they're absolutely fictional. I never worked on landscapes, and suddenly I had landscape images from very far away.



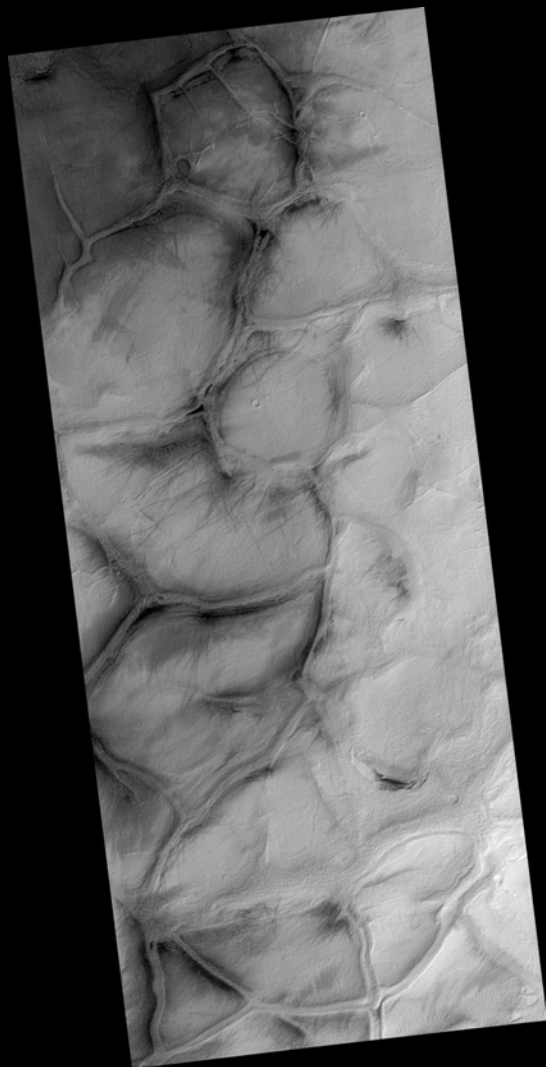
Gagosian Gallery, London, 2012

I also thought in these images I was dealing with a topic that currently is being discussed heavily in contemporary photography: What is fiction, what is real? The images have a bit of both. What is fiction and what is real - that's not the main idea, but it's also part of ma.r.s., and I like that.

Thomas Ruff, 2013



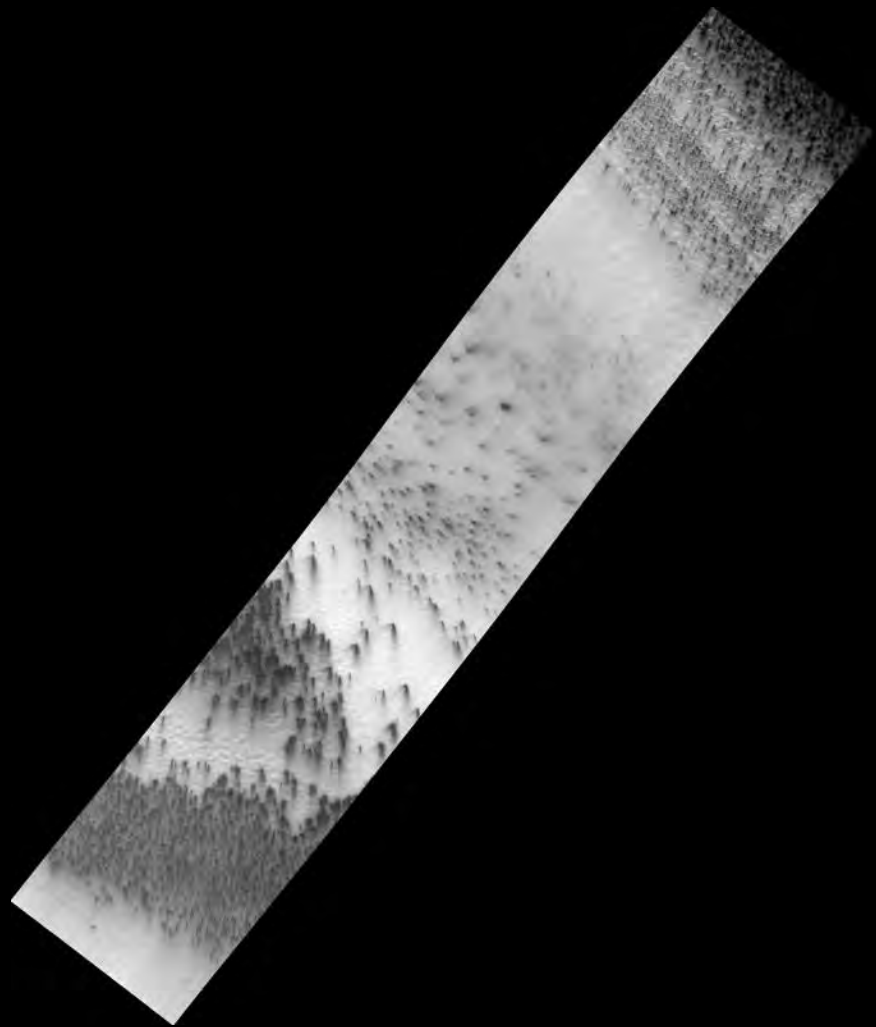
Musée d'art moderne et contemporain de Saint-Étienne
Métropole, Saint-Priest-en-Jarez, 2022



PSP_007069_1430, 29 January 2008



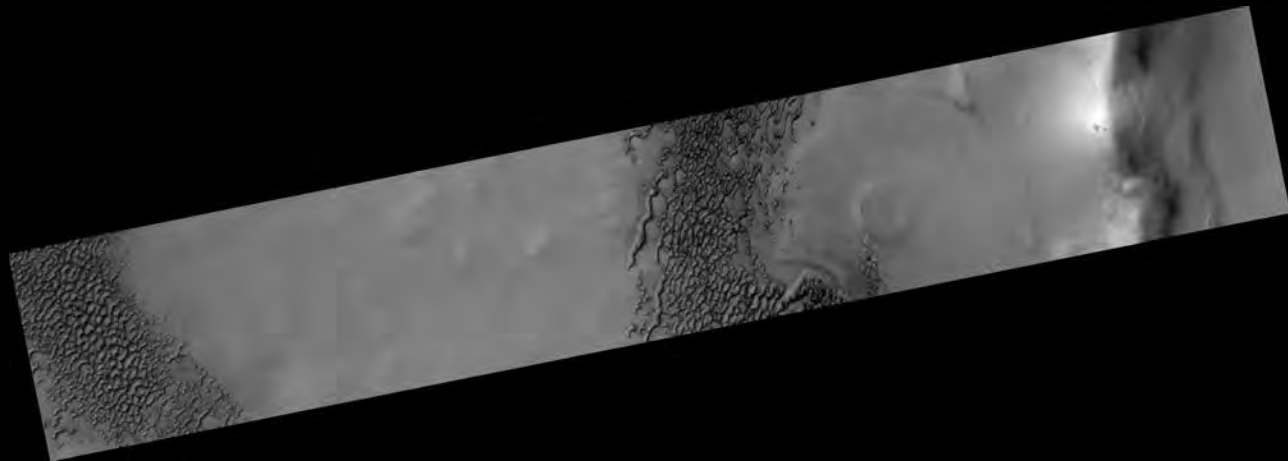
Thomas Ruff, ma.r.s. 05 I, 2012



PSP_002758_0945, 27 February 2007



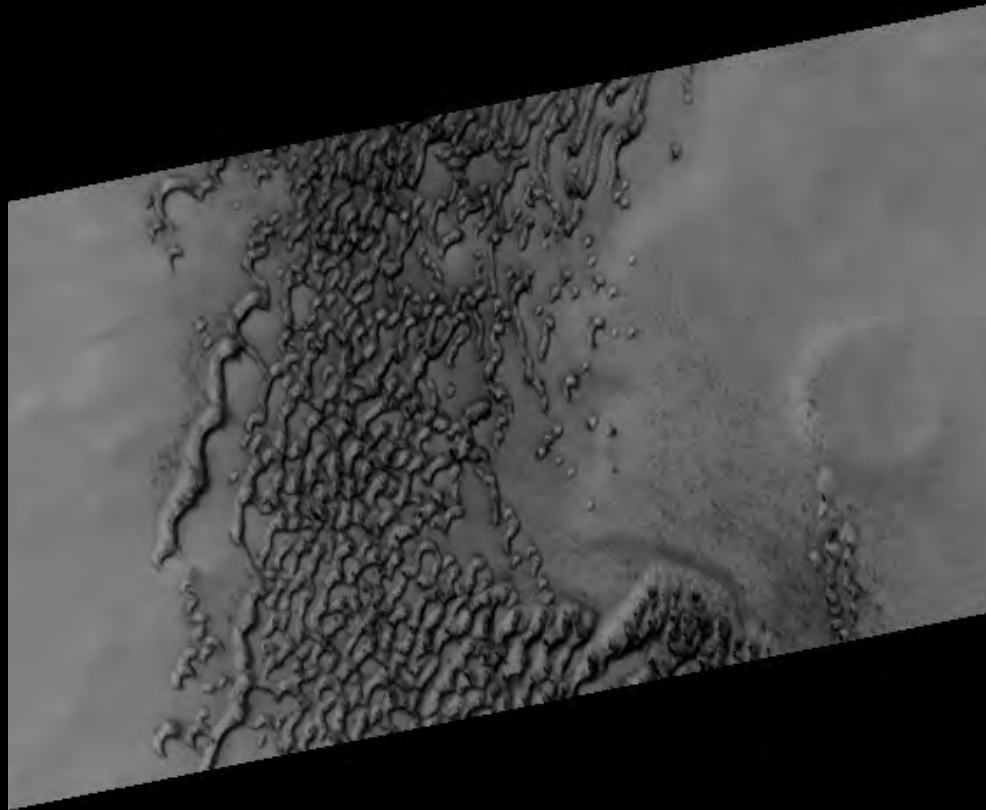
Thomas Ruff, ma.r.s. 06 III, 2012



PSP_007779_2570, 24 March 2008



Thomas Ruff, ma.r.s.15, 2011



PSP_007779_2570, 24 March 2008, detail



Thomas Ruff, ma.r.s.15, 2011





Image: NASA/JPL, Color: 20140803
Image Size: 2000 x 1500 x 1500
Image ID: JPL_2014_08_03_0001_V01
Image processing: Ryan Johnson



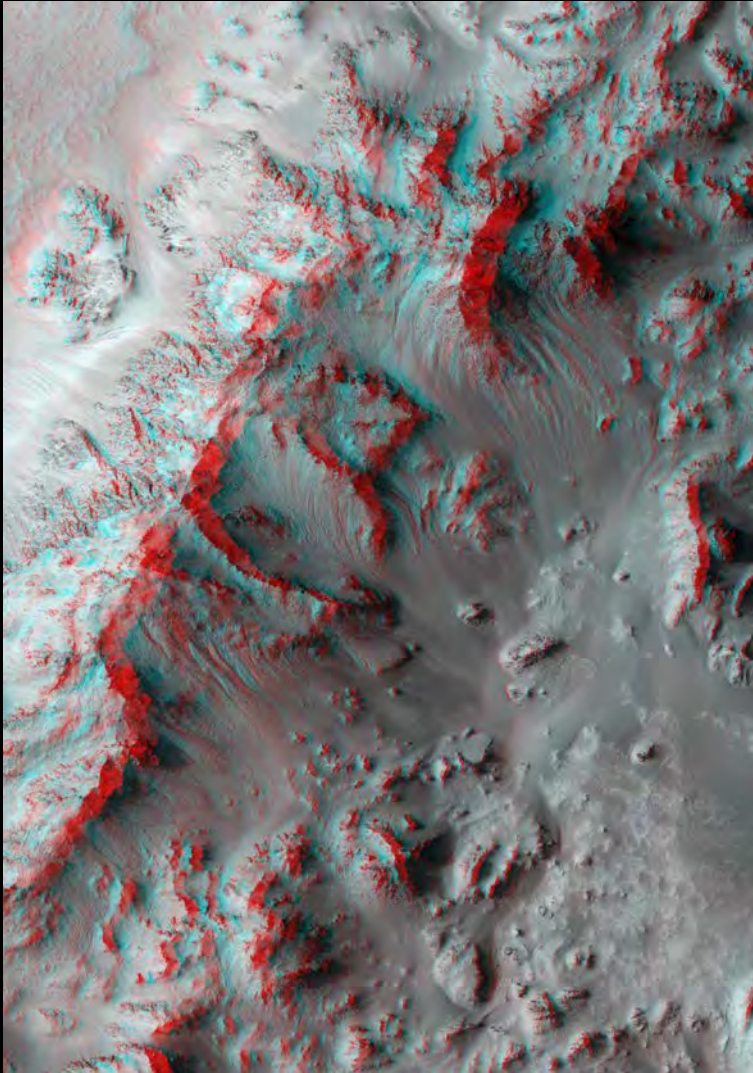
Image: NASA/JPL, Color: 20140803
Image Size: 2000 x 1500 x 1500
Image ID: JPL_2014_08_03_0001_V01
Image processing: Ryan Johnson

In thinking of NASA pictures, everybody has in mind the fantastic photographs of intergalactic mist or stellar clusters made by the Hubble Space Telescope. In fact, colour is very common in astronomical photography. That has driven us to a very multicoloured conception of the universe... (laughs). But colours in space are relative. The various kinds of light as we see them are only a very small portion of the diversity of electromagnetic waves that exist in space. In colouring the Mars photographs, I sometimes used scientific references, and sometimes my imagination.

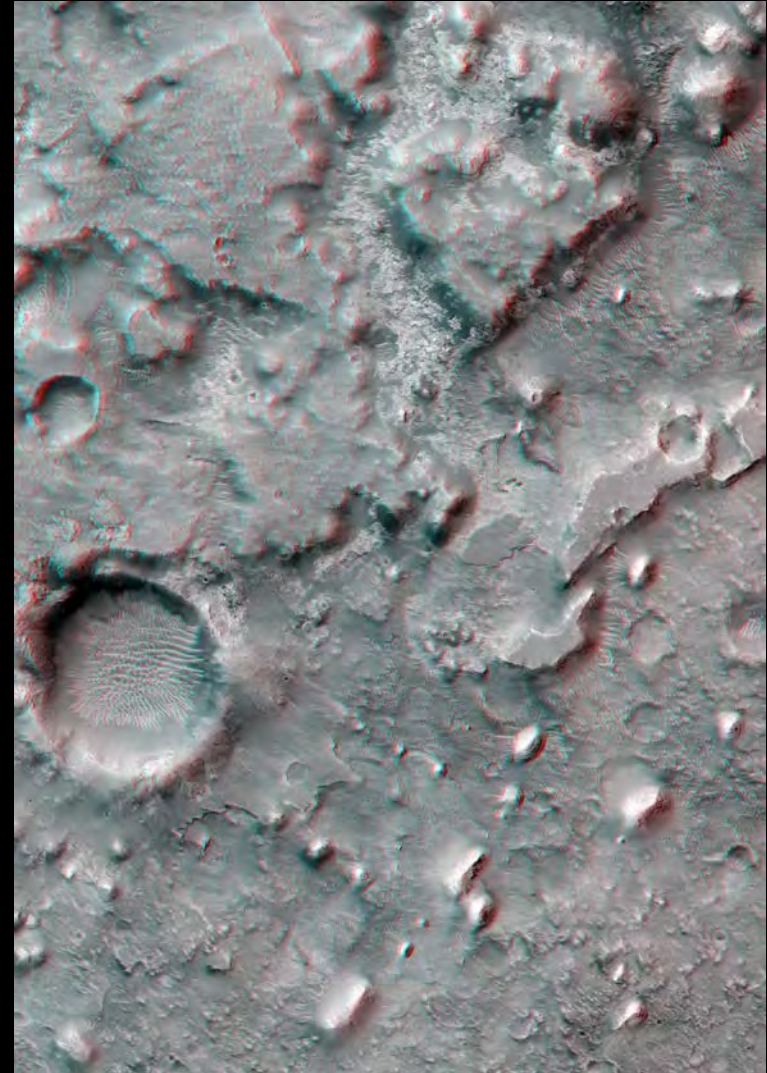
Thomas Ruff, 2013

Electromagnetic radiation in the universe ranges from 10,000 to 10^{-17} meters in wavelength, but for the naked eye the visible spectrum is between 380 and 640 nanometers. A telescope might be able to capture a wider spectrum, but it would need technical additions to make that light visible. Radio telescopes are picking up electromagnetic waves you can't detect with the eye, and with certain tools you can also visualize them. So actually, if we want to look at space more accurately, we should use different prostheses and not only the camera. Photography is only a small part of our access to understanding things in space.

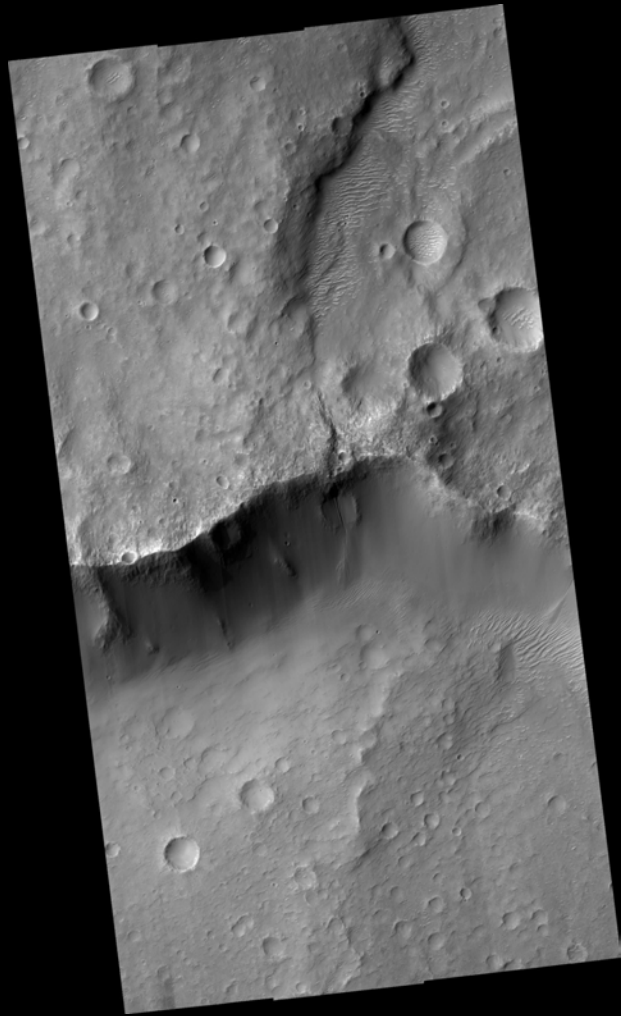
Thomas Ruff, 2017



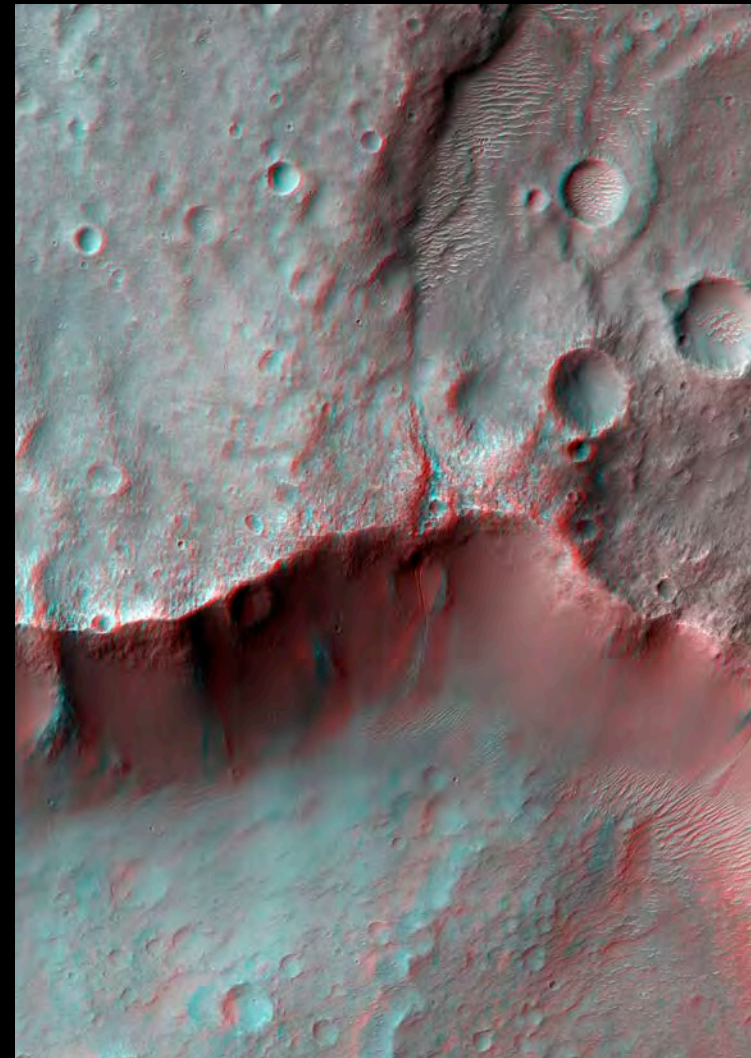
Thomas Ruff, 3D m.a.r.s. 16, 2013



Thomas Ruff, 3D ma.r.s. 08, 2013



PSP_002068_1510, 11 March 2007

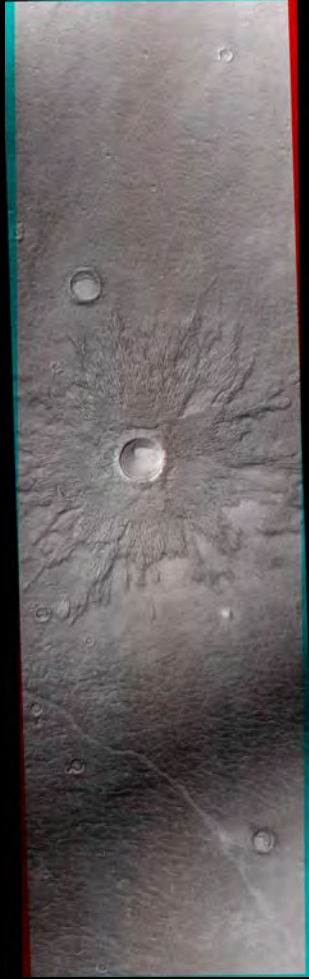


Thomas Ruff, 3D ma.r.s 01, 2012

PSP_009021_2245, 29 June 2008



PSP_009654_2245, 17 August 2008



Thomas Ruff, 3D ma.r.s 11, 2013



K20. Kunstsammlung Nordrhein-Westfalen, Düsseldorf, 2020